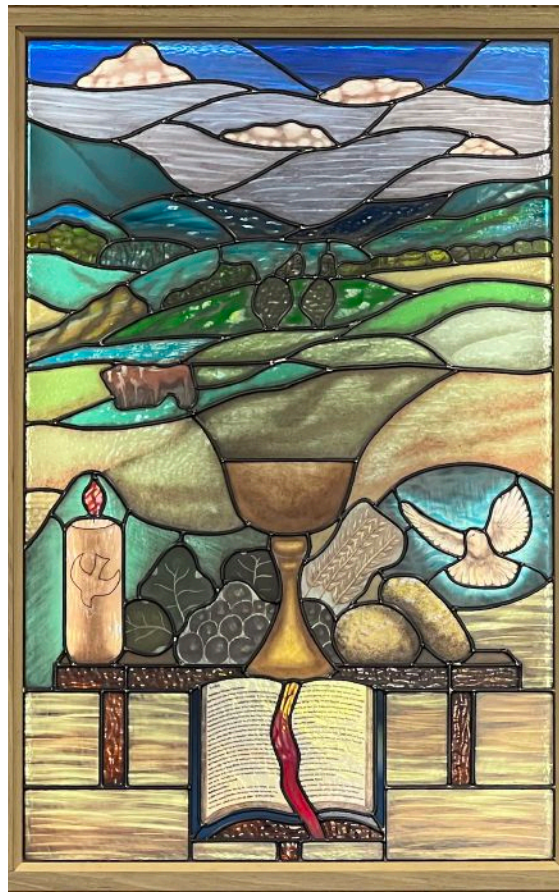


Comments from David Williams, the artist.

I wanted a peaceful pastoral scene behind the key elements and suggest that it reminds us of the psalmist's words in Psalm 121: *"I will lift up my eyes unto the hills from whence cometh my help. My help cometh from the Lord who made heaven and earth."* Stretching the imagination further the scene could represent our world that is free from strife and chaos.

The Marriotts. It was a privilege to design this section as I knew Fred and Irene. In the 1970's Fred was a church steward at Springvale Road Methodist Church - a jovial welcoming man with a loud voice! We have known Irene for about 40 years of her long life - practical, efficient, avid gardener and rose lover, a great



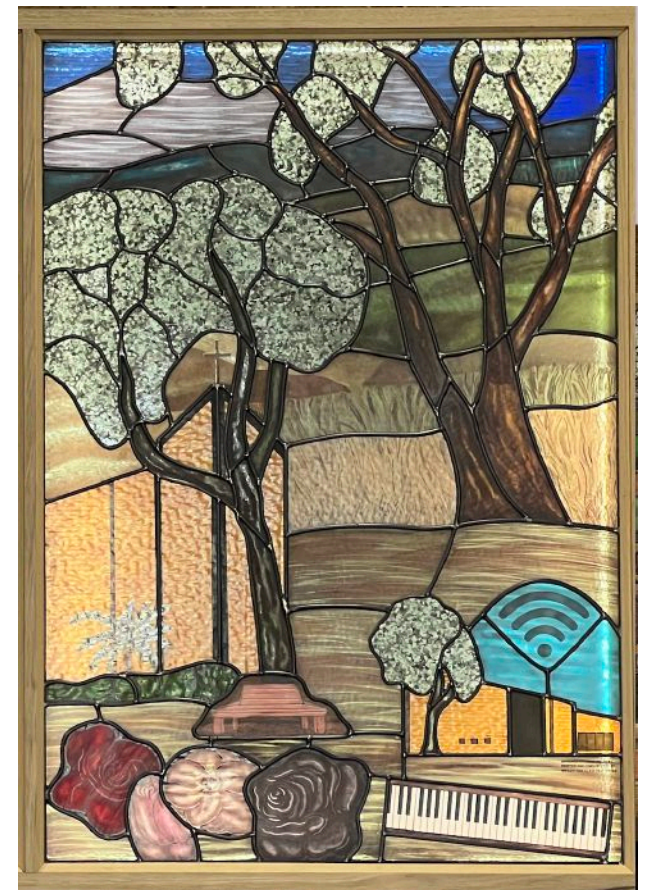
worker and much loved member of Waverley Historical Society, a musician and staunch church member.

As pioneers, the Marriotts gave the land and built the first Methodist Church in Waverley, pictured here, and served it well before transferring to our church. They planted gum trees near the corner of Springvale & Waverley Roads, so gum trees feature in the window. Some products of their market gardens are shown plus some livestock.

The central elements represent the congregation. Shown here is the Communion Cup, loaves and grapes, the Bible, the baptismal candle and the dove for the Holy Spirit.

Our present Church. Irene Marriott was a long term church member who was a regular contributor to the life of the church through music, flower roster and many activities.

The seats around the gum trees are a resting place and also an invitation to be part of our congregation. The roses are a reminder that Irene grew and loved her rose garden. At the right is our present church with two important elements shown above: the international sign of wi-fi represents our church's digital ministry and the keyboard represents the long, outstanding musical tradition in worship provided by many choirs and hosts of musicians of which Irene was one.



*I will lift up my eyes
unto the hills from
whence cometh my help.
My help cometh from
the Lord who made
heaven and earth.*

Psalm 121

*Art Panels Designed by
David Williams*

*Painted and Constructed by
Wesley Vine Glass Craftsman*

The Marriott Bequest.

Upon her death, Irene Marriott left a generous bequest to Glen Waverley Uniting Church, which in part was used to fund the creation of the art panels.

A Journey - Artwork to Glass Art

At a congregational meeting in March 2022 a call was made for members to form a new committee to progress the requirements of the Marriott Bequest. A committee of Susan Karoly, Barbara Thompson, Don Cormack, Bill Norquay, Shirley and David Williams answered this call.

An initial step involved contact with Wesley Vine Glass Craftsman P/L and Wes met our committee at the church to discuss the project. This resulted in a decision to hang a three-panel glass work on a wooden frame with LED backing lights.



David's original art work (pictured above) was displayed on the foyer wall, and with some minor alterations, was approved.

A quote from Wesley Vine Glass Craftsman was submitted to treasurer Ken Coutts for approval. Ken's role in contract details was invaluable to acceptance of the quote and the order to proceed with the work.

At the factory, the challenging project was in the hands of skilled workers: Wesley, Genevieve and Robert, who made templates of all the elements in the watercolour painting. From the templates, suitable glass was selected and cut, then treated with heat and chemicals to get the required colours. Eventually, the formed pieces were enclosed in fine lead and joined to create the art panels.

Special recognition should be given to Rob McDougall's electrical work in what is a critical component of the completed work.

The Glass Art Panels were installed in the church foyer on 24 January 2023.

David Williams, artist.

Foyer Glass Art Panels



GLEN WAVERLEY
Uniting Church