



## Welcome.

*Glen Waverley Uniting Church is a faithful, Christ-centered community that meets God and shares in that unconditional love.*

# Thank You Alane!

Thank you for being you.  
Thank you for friendship.  
Thank you for wisdom.  
Thank you for your help.  
Thank you for taking the time to talk.  
Thank you for your dedication.  
Thank you for your guidance.  
Thank you for your kindness.  
Thank you for your support.  
Thank you for Kenya.  
Thank you for Uthies & Youth.  
Thank you for Kats & Dogs.  
Thank you for Kids Talk each week.  
Thank you for your creativity.  
Thank you for the Easter Events.  
Thank you for Christmas Services.  
Thank you for the Senses of Christmas.  
Thank you for being a valued netball player  
Thank you for State Youth Games.  
Thank you for face painting at the Church Fete.  
Thank you for making us believe that you memorise  
your sermons each week.  
Thank you for caring about our children.  
Thank you for believing in us.  
Thank you for SO MUCH MORE!

*Thank you for such a wonderful contribution to GWUC  
for 16 years!!!*

**"I always thank God for you because of His grace given  
you in Christ Jesus"**

*1 Corinthians 1:4*

*written by the Cornell family*

## What's On...

*Not all events are held each week - please contact the church office for details.*

### **WORSHIP SERVICES**

8am **Contemplative**

9.15am **Interactive (+live broadcast)** incl. Holy Communion  
- 1st Sunday of each month

11am **Traditional (+live broadcast)** incl. Holy Communion  
- 3rd Sunday of each month

1pm **Indonesian Fellowship on Zoom**

5pm **Creative Worship**

#### **MONDAY**

10.00am **GOMERs**

10.00am **Playgroup**

10.00am **Leisure Time**

10.00am **Craft Group**

8.00pm **Badminton**

#### **TUESDAY**

10.00am **The Hub**

10.00am **Playgroup**

2.00pm **Mindful Meditation**

4.00pm **Meditation Online**

7.30pm **Bible Study**

#### **WEDNESDAY**

7.30am **Prayer Time Online**

8.00pm **Free Spirit**

#### **THURSDAY**

11.00am **English Conversation Class**

7.00pm **Monthly Reflection Online**

#### **FRIDAY**

9.30am **Choir of Hope**

5.30pm/7.00pm **Uthies/Youth**

### **GWUC Westpac Bank Account**

Uniting Church Glen Waverley

BSB: 033 052

Account Number: 92 2198

## Welcome to *Kingsway* Magazine

"Kingsway" is a regular magazine of Glen Waverley Uniting Church. It is designed to provide a voice for the church community to share activities, thoughts, celebrations, stories and the faith journey, and will present to the church community the quiet achievers and achievements in the life of our church. "Kingsway" has a multi-generational, multi-cultural and missional focus and is designed to build community, lift the spirit and strengthen our faith. If you have an item, article or notice that you think will be just right for "Kingsway", please contact Joanne Boldiston ([office@gwuc.org.au](mailto:office@gwuc.org.au)) or David Fraser ([davidfraser60@gmail.com](mailto:davidfraser60@gmail.com)).

## An Ordinary Person...

Ann (not her real name), Dad's younger sister, was born with a hole in the heart. In the 1950's, there was not an immediate remedy for this, so she endured various health issues most of her life, even after an operation in 1988 by a surgeon at the Royal Children's Hospital.

But Ann had a big heart! As an auntie she would drive across town to deliver presents ON my actual birthday, even if it was a workday for her. She readily hosted family events and Christmases. There were always much spoilt pet cats, including the one that outlived her.

Although brought up as nominal Church of England, Ann found a personal faith for herself, attending Bible fellowship and was baptised as an adult in a swimming pool. When she came up from the water her robe was white and her face radiant.

After caring for her parents until they passed away, Ann and her husband realised their dream and moved to Queensland. Although she couldn't regularly visit, she would ring, send gifts, cards and the Christian verse cards - often with cats depicted!

Although her bouts of illness were increasing, it was still a shock to find in 2015 that she was not going to make it through. My sister and I went to her well-attended funeral.

Biography but not eulogy... I guess I take from it that Ann was an ordinary person whose faith and love influenced me and many other people who knew her. *Wendy Pepper*



Wendy and 'Ann'

## FOYER & FELLOWSHIP HEATING/COOLING UPGRADE

We are excited to announce that we have received a \$10,025 Community Climate Change and Energy Action program grant from the Victorian Government through Sustainability Victoria for our Foyer and Fellowship heating upgrade project which will replace the old ceiling heat blankets with energy efficient Inverter Air Conditioners giving us greater control over the comfort in these areas with the added option of cooling.

We're proud to support Victoria's transition to a circular economy through replacing our old energy intense solution.

In late January 2022, Property committee had an opportunity to seek a 50% grant funding from Sustainability Victoria, for the replacement of our 30 year old inefficient ceiling electric heating in the Foyer/Fellowship area. This heating has now broken down and is not 100% operational or effective. By selecting 4 Inverter Air Conditioners, strategically placed in the area, that will both heat and cool extremely efficiently, we were eligible to make an application for the grant. It is also consistent with our overall Solar strategy and give us previously not available cooling in those areas.

The members of our Church Council, the Treasurer and Finance Committee enthusiastically supported this application but on the basis that if successful we could proceed with the upgrade in late 2022, at a total estimated cost of \$20,052, of which the grant would give us \$10,025. Our share of the project will be paid from our Deferred Maintenance Reserve and not impact the work of replacing the ministry team. If we were not successful, then a lower cost option could not be considered until late 2023 and be subject to our finances at that time.

We have been successful in receiving a grant of \$10,025 and the works will be completed (hopefully) by the end of 2022 in time for summer.

Thank you to the Church Councillors, Treasurer and Finance committee for their support and a special thank you to Synod Property Services who assisted in this application and meeting its conditions. This project will make maximum use of our solar installation and further reduce our overall carbon based power consumption. It will also provide an inviting and exciting welcome environment in our church and mission.

Warren Greenwood  
Property Chairperson.





# a brief note of thanks to Sheila Chan

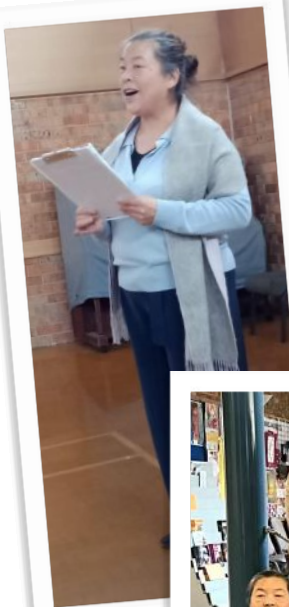
Under the Inclusive Community Missional Group convened by Jan Clear, we have talented and generous teachers who run our free weekly community English class.

Over many years Sheila Chan (who attends the 8am service) has been an inspirational leader of the weekly bi-lingual Chinese-English class, originally with Angel Shea and later with Lina Liu, and then during the covid lockdown exclusively on social media.

Sheila has set a high standard with her tireless dedication and creativity resulting in varied activities and a lot of fun.

Her work brings together all her skills and experience as a professional Chinese-English translator and teacher. Behind that is her deep knowledge of Australian and Chinese cultures and her heart to share her Christian faith.

On behalf of her students and the church I'd like to thank Sheila for her dedication, and the amazing example she has given of Christian service. We wish her all the best while she has a well-earned rest. *Glyn Howells*



Ann Zhou  
singing at the  
last class

Huixin Zheng  
played "Abide with  
me" on the flute as  
a thank you.

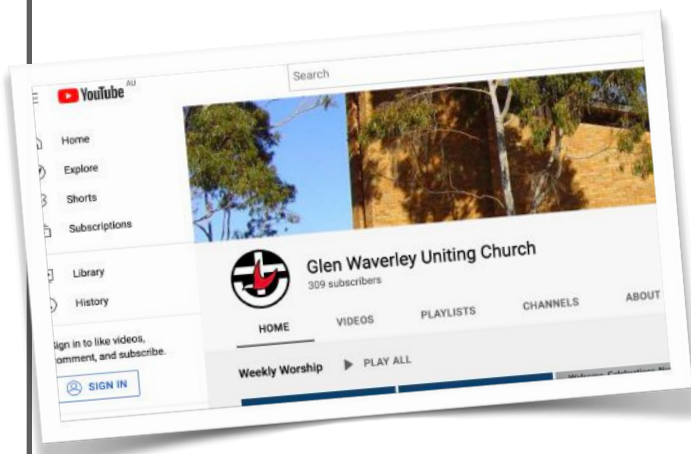


# DIGITAL MINISTRY UPDATE

I am often asked about the number of "hits" that our broadcast and digital ministry activities receive. This is a standard measure of success for many online organisations. But for us it is only an "indication" of our ministry reach because we are unable to determine how many people are watching at each "hit" location. For example, we have a number of country churches who watch live or delayed. Their login shows as one hit, but there may be 15 to 20 people watching. We can never know how many people watch overall, but we can tell you some things about our hits.

So here are some statistics about our Digital Broadcast Ministry reach.

We have 305 Subscribers to our YouTube channel. These are the people who, by choice, receive notifications that a service, meditation, monthly prayer or monthly reflection is



scheduled so that they may be reminded to watch.

Each week, as well as our physical worship attendances we record the number of people watching live online at the service. In addition, we also record how many have watched that service over the following week. The book with this data is kept on the Stewards desk in the foyer and is maintained by the stewards and the broadcast team each week. You are welcome to have a look if you are interested. But below is a summary table of what the recent numbers tell us. I have only shown May/June/July 2022 for interest. It also records 8am and Afternoon/Evening worship, but for this article I will focus on the Broadcast Ministry only and totals with Adult/Child splits.

The *Online* number is those watching LIVE during the service. The *Viewed* number includes those who watched live. During COVID lockdowns these online numbers were very different.

## Live and Online Viewing numbers 2022

Date	9:15 Present	9:15 Online	9:15 Viewed	11:00 Present	11:00 Online	11:00 Viewed
May 08	32	32	105	61	21	59
May 15	44	32	125	45	22	186
May 22	61	31	151	?	36	152
May 29	44	26	108	50	32	73
June 05	42	32	263	46	25	258
June 12	31	23	114	37	24	106
June 19	41	29	82	77	29	63
June 26 Church Anniversary				138	63	159
Jul 03	34	26	92	47	28	75
Jul 10	31	19	101	37	39	126

In addition, the following "hits" are of interest:-

- Weekly/Monthly Reflections by Rev Neil Peters 15 - 25
- Weekly/Monthly Prayers by Rev Neil Peters 12 - 35
- Monthly Meditations by Susan Karoly 19 - 23

These are all a part of our Digital Ministry.

And some other observations of interest. For reasons only known to God and the viewers, we have received over **800 hits** to our June 2020 Worship AND nearly all of the services during COVID lockdown continue to get hits totalling in excess of 400 each week. Amazing.

Our Office and Ministry team members also continue to receive weekly emails of support, encouragement and thanks for these worship services from all over Australia and sometimes even from other countries.

We also live stream to many countries and other Australian locations the funerals we record. This has enabled people in the UK, Indonesia, USA, New Zealand and Malaysia to be present at funerals they could not attend. We have included eulogies from overseas attendees to these funerals allowing them to participate in these special occasions. And some years back, we even had God-Parents say their vows live from the UK!!





## DIGITAL MINISTRY UPDATE *cont.*

### Some other stats of interest that YouTube captures:

If we take for example just our recent Pentecost 9:15am worship on the 5<sup>th</sup> June:

- 24% watching were in Australia
- 23% watching were in the US
- 5% watching were in the UK
- The remainder were indeterminable.
- 39% used a mobile phone to watch
- 33% used a computer
- 15% used a TV
- 13% used a smart tablet
- 35% use an Android device
- 26% use a Windows device
- 19% use an Apple device
- 3% use a smart TV

These are all data that YouTube captures when you login to watch – clever or scary?

So our Digital Ministry is far reaching. It is amazing who, how and why people may watch, but it is also a privilege that our worship, prayers, reflections and meditations are so important to so many people. We know that during COVID lockdowns we helped save many congregations, and individuals from missing out on worship. And for some, their churches never recovered from that closure and we remain their only source of support and spiritual comfort.

I cannot finish without a personal observation. There are more people watching our worship, whom we do not know and do not speak to directly, than we have attending our worship live. What does that say about our ministry? And to answer an obvious question – “*Do any of them contribute to the financial costs of our congregation?*” – **Yes** – some do, through our website links and through a direct contribution.

*Warren Greenwood  
– on behalf of the Broadcast Team*

### *A message from Church Council...*

Church Council reluctantly accepted Alanee Hearnshaw's resignation from her position as Youth, Young Adults, Children's & Families and Outreach Pastor. Alanee has been sharing her multitude of talents with us for 16 years. She will conclude her ministry position at Glen Waverley on 31 October 2022.

As you can see from her position description the breadth of her work has expanded over the years to match her creativity, her dedication and the divine gift of being able to walk beside and lead others.

Alanee has written: “I have received a call to Minister at St Cuthbert's Lorne, I wrestled with this deeply and I have come to the conclusion that I am being called into a new ministry chapter....I really hope and pray that this enables the congregation to dream, vision and imagine exciting ways of ministry going forward, and I am so thankful for being able to be part of this inspiring congregation”.

We pray for Alanee and Joel that the wind will be in their sails, and the waves will break gently as the Spirit leads them to the very edge of the Southern Ocean in this land now called Australia.

*Glyn Howells  
Chair of Church Council*



# Some Memories...



With such creative flair, Alanee infuses worship with interactive elements and inspirational accounts. Her children's talks have been entertaining and enlightening for both the young and the older.

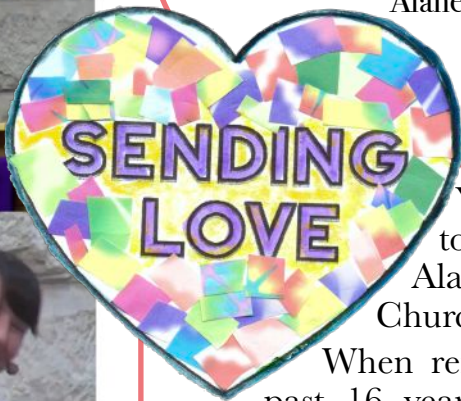
Story has been a valuable part of Alanee's teaching, whether it includes props, videos, the putting on of costumes or the telling of stories in rhyme.

An interactive nativity service some years ago holds a funny memory. For a teenager, the selection of children's costumes provided in the foyer were going to be a tight fit, so squeezing into the golden star vest and golden star hat was a funny sight. When Alanee called for any Stars to contribute to the nativity scene, I rose from my seat, as Alanee glanced across, she was stopped in her tracks for a second and couldn't help but take a moment to laugh.

Alanee gently encourages us to extend ourselves and always shows her gratitude for our input. During a children's talk, Alanee taught us to look for the 'Extraordinary in the ordinary, as God uses all sorts of things to show love'.

Alanee has forever changed the way we look at our world.

Nathan



You would need every page of this publication to effectively put into words the impact that Alanee has had on the Glen Waverley Uniting Church community.

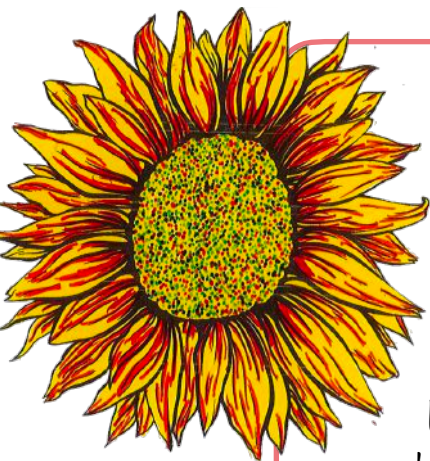
When reminiscing about the memorable events of the past 16 years, they all have one thing in common: Al's creative, artistic and spiritual stamp on them: thought-provoking Christmas Eve services (including a free-range petting zoo, a Mini car in the church, a wall of TVs, artworks, and a giant feasting table), Easter and Christmas events, Moon Festival activities, Fundraisers, NCYC, Youth Group nights and camps, Young Adult Group dinners and many, many more. One of Alanee's greatest strengths is forming relationships, ensuring people feel they belong and giving them the opportunity to contribute to the life of GWUC.

She has encouraged everyone to pursue an active faith and provided opportunities for people to live out their faith in local and international communities. Alanee has stretched our thinking and challenged us with new perspectives, all with a smile and in her informed, relatable, conversational style.

We feel fortunate to have walked alongside Alanee and Joel during their journey at GWUC and value their friendship and the role they play in our lives and in the lives of our children, who adore them.

Kat and Jason Mann



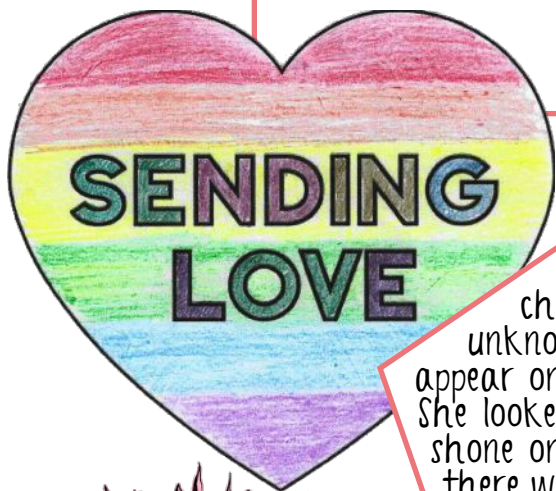


Alanee has packed plenty into her 16 years at GWUC!

In the early days young adults would meet for evening small groups at Larch Crescent, as well as youth group on Fridays. Many of us were involved in the coordination of NCYC in Melbourne in 2009, as well as attending as delegates and volunteers in the years before and after. The annual State Youth Games is always a highlight.

Alanee has always nurtured and fostered the unique talents of each of the young people she has encountered at Glen Waverley and we will miss her enormously but still be blessed with the impact of her lasting influence on each of us.

Nicole Boyer

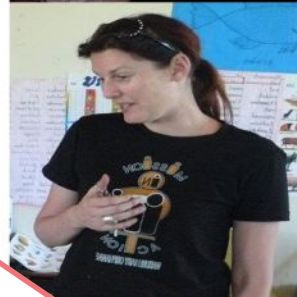


We remember that moment when we were forced into lockdown and 'couch church' started. We were in a strange unknown period, but the moment we saw Alanee appear online, we knew she was talking directly to us. She looked down the barrel of the camera, her smile shone on us from our tv screen, and we were right there with her.

Alanee extended that same sense of connection for the children through sharing her warmth and hope with children's and u18s programs online, these were really important gifts to our family. So many moments shared by Alanee fill our hearts.

Wojak family

Dear Alanee, we wish you all the very best with whatever the future holds - because you deserve the very best! with love from your Glen Waverley Uniting Church Family!



## **Ministry Team**



**Rev. Neil Peters**

Minister of the Word

0417 580 532

[revneilpeters@gmail.com](mailto:revneilpeters@gmail.com)



**Alanee Hearnshaw**

Youth & Young Adults

0402 030 342

[alanee.h@gmail.com](mailto:alanee.h@gmail.com)



**Jemma Graham**

Children & Families

[jemmagraham@gmail.com](mailto:jemmagraham@gmail.com)



**Di Paterson**

Pastoral Care Worker

0400 961 052

[dpaterson7@bigpond.com](mailto:dpaterson7@bigpond.com)



**Joanne Boldiston**

Office Manager

9560 3580 or 0434 119 335

[office@gwuc.org.au](mailto:office@gwuc.org.au)

## **Ministry Team & Office Email**

[minteamandoffice@gwuc.org.au](mailto:minteamandoffice@gwuc.org.au)

# *Sharing Faith*

with KGPM Minahasa trainee ministers (vicars)

What's happening in Minahasa in the weekly zoom sharing faith English class?

With the support of Gbl. Francky Londa the Moderator of KGPM and Mr. Lucky Kalonta, Andrew Hosking and Glyn Howells are running a weekly zoom with trainee ministers (vicars) from North Sulawesi Indonesia.

This is one of their stories...

### **Meilany's story**

This is where I started to contemplate whether God loves me or not. I was at the lowest point in life where I had to accept the reality of being an orphan when my mother died when I was only 7 years old. Life went on until I finished high school and wanted to go to college, but I couldn't go to college that year. I was very disappointed and this is where I often looked at the sunset while contemplating the fate of my life. I often cried in this place and wondered, 'God do you really love me? Does the future really exist'?

I will not forget; it was like he was talking to me: "Look at this scene.. your future is much more beautiful than the sight you admire." Since then I have seen hope in life. In the following year I continued my education at a theological college and am now giving myself to serve God. Even though it is not easy to carry out this service, one must suppress all selfishness and even be humble in dealing with the behaviour of the people being served. But I have experienced God's love. I also want to love them with the love that God revealed to me.

I learned that: to see the bright light of the sun, we must pass through the darkest darkness of the night. But the truth is God will always be there.

