

# Re-visioning 2022: a Proposal

*from the Church Council*



# What are the projects?

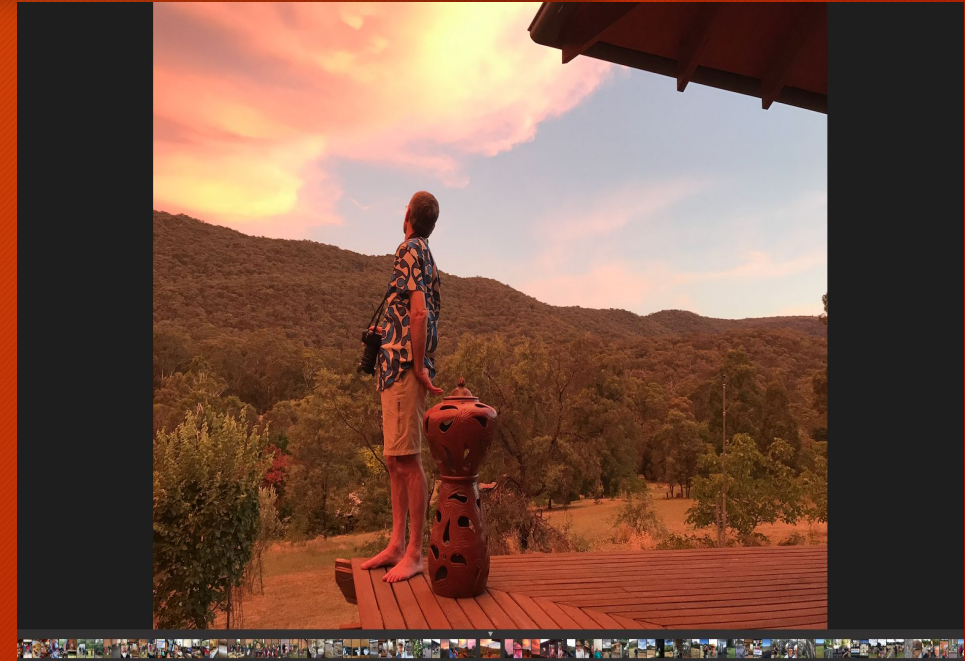
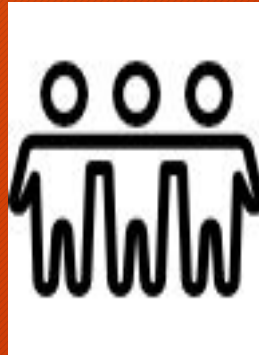
- Project 1: Welfare
- Project 2: Program of Intercultural & Intergenerational Events
- Project 3: Digital Ministry
- Project 4: Outreach to Glen Waverley Community



# How should we move forward? *Collaboratively.*

*“When we discern and make decisions as people of faith, we do it communally. We listen and attend to the wisdom of others gathered in community.”*

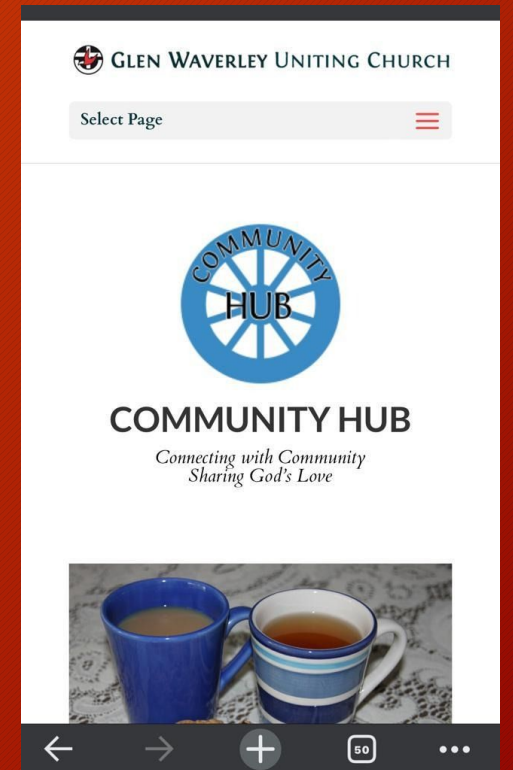
(Moderator of UCA, 2021)



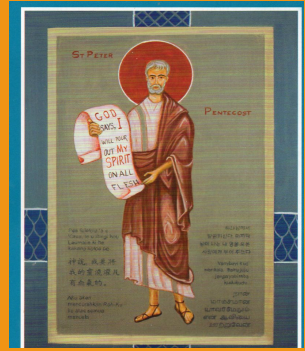
Is this a new vision?

*No ...but some new initiatives floated*

- Projects build on the current vision
- our wonderful existing programs & activities continue
- Church Council is seeking feedback as the work takes shape and is refined.



# What is the path ahead?



Each proposal still needs:

- **leaders/ teams/enthusiasm/ volunteers**
- to be worked through by relevant groups
- and to be endorsed by Congregation

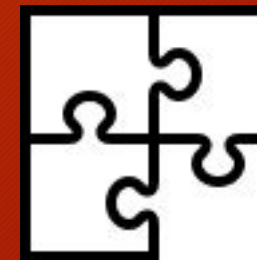


# Why were the projects chosen?



## *INITIATIVES*

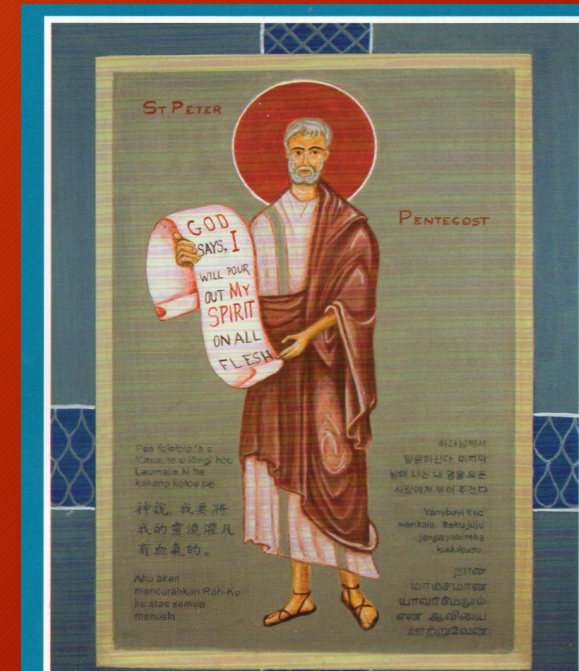
- designed to reinvigorate our community.
- are outward looking
- embrace local community
- Recognise our untapped creativity
- some already have enthusiastic advocates
- not all are new



# Why were they chosen?



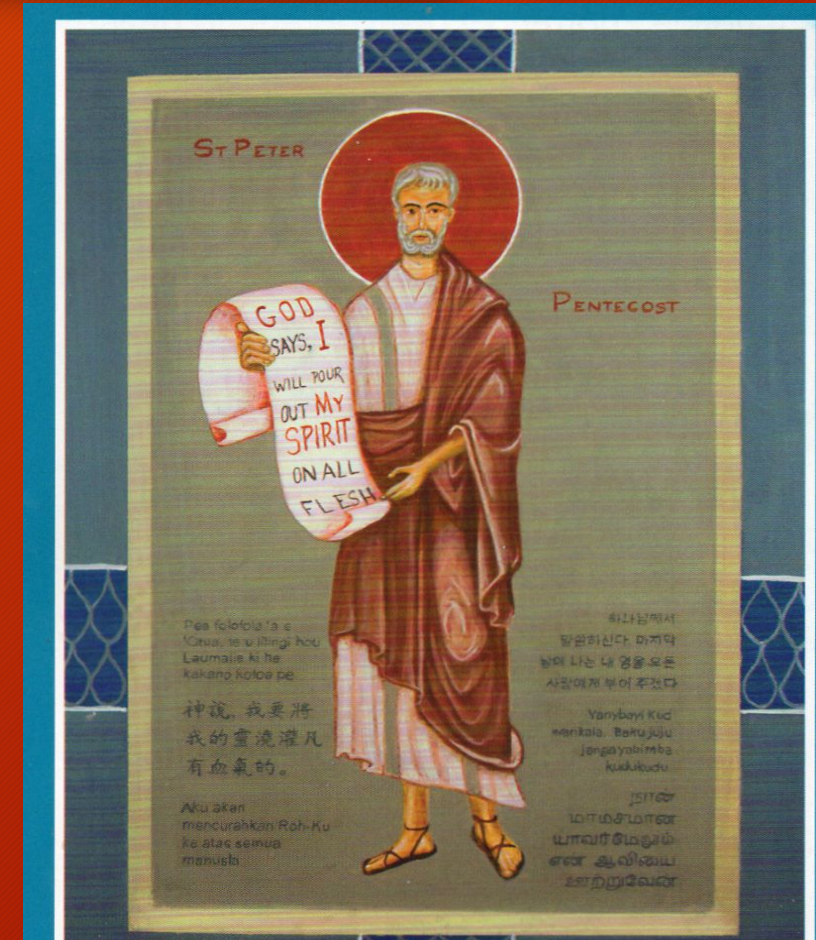
- The Uniting Church is a missional Church:
- not just in existence for its members
  - needs an inward focus + an outward focus



# Consistent with our vision

- “GWUC is a faithful, Christ-centered community that meets God and shares unconditional love”

*Glen Waverley Uniting Church Vision Statement (2014)*





... Why were they chosen?

“...an ever new ... call to embody Christ’s mission in the changing and unique contexts in which the Spirit of Christ leads us.”

*(Basis of Union 1977)*



# What are the projects?

- Project 1: Welfare
- Project 2: Program of Intercultural & Intergenerational Events
- Project 3: Digital Ministry
- Project 4: Outreach to Glen Waverley Community



# Project 1: Welfare

## *FOUNDATION*

- Finance Committee is looking at external funding for paid role.
- key component of GWUC organic vision.



# Project 1: Welfare - what is our vision?

- to follow Christian principle of being inclusive in our love and care for others, especially the vulnerable, marginalised and disadvantaged.



# Project 1: Welfare - what is our vision?

- **2022** - Fund the Coordinator for 5 hours a week from bequests and maintain the work of the Welfare Committee.



# Project 1: Welfare - what is our vision?

**2023** - Grow welfare work

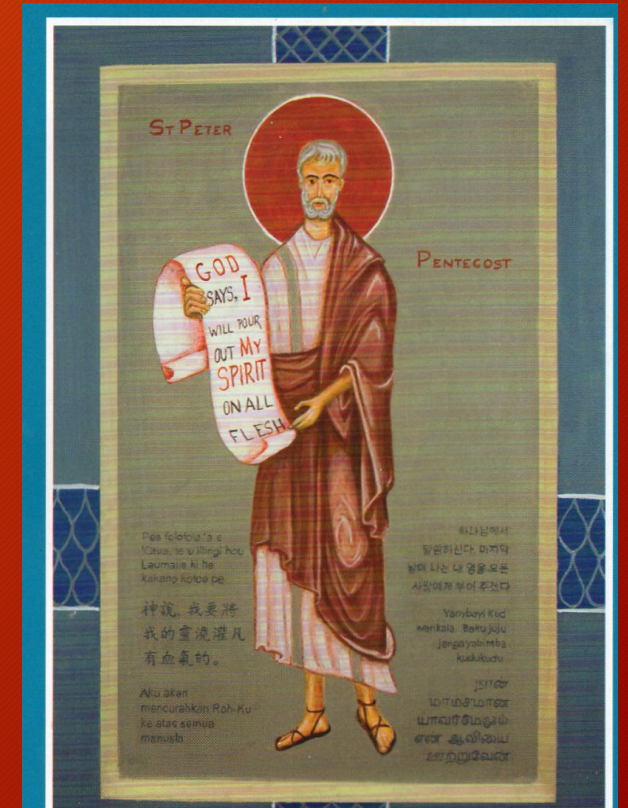
- increase time fraction of Coordinator to one day a week



# Project 2: Program of Intercultural and Intergenerational *EVENTS*

## *FOUNDATION*

- Currently over 50% of the population of Glen Waverley were born overseas.
- GWUC needs to be engaging with new people



## 2... Program of Intercultural and Intergenerational *EVENTS*

- *VISION*
- to become the place where exciting, creative and collaborative events take place for the purpose of sharing and growing our faith in God.





## 2 ... Program of Intercultural and Intergenerational *EVENTS*

### *VISION*

- Create a meaningful, effective and safe intercultural and intergenerational program of events
- Use of arts to explore ways to respond to the mental health needs of individuals



## 2 ... Program of Intercultural and Intergenerational *EVENTS*

- WHERE? - WHEN?
- Set up Room 1 as an events space
  - But events only occur when room not booked
- advertise **events** widely
  - times and content of specific events.



## 2 ...What sort of events can you envisage?



- as input to worship services such as for Easter/ Christmas.
- storytelling, performing and cinema.



## 2 What sort of events can you envisage?

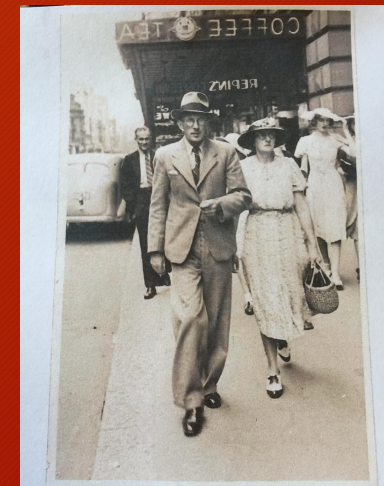
- creations by talented people involved in art, dance, craft,
- music, painting,
- sculpture, literature, poetry, puppetry



# ..What sort of events can you envisage?



- Tutorials associated with learning
- Virtual presentations using computer generated images and videos



# Example of promotion for Events program



## Free Community Events



presented by  
Glen Waverley Uniting Church



### PROGRAM

Date

#### Art and Craft

Guest speaker, tutorials ( woodworking, watercolouring, book publishing, patchwork, spinning)

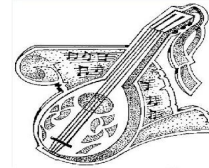
Bring your own aet or craft along.



Date

#### Multicultural Concert

Free Spirit choir, solo performances, Indonesian Angklung choir, Youthful singers



Date

#### Mind and Body - Nutrition and Diet

For those wishing to rediscover their passion for nutritious food as well as for good physical and mental health.

Attendees will be provided with nourishing and delicious snacks to taste whilst speakers talk about the importance of a healthy body & mind.



Date

#### Climate Change - Environmental Projects

A renown climate scientist will speak on climate change.

"How to" tutorials: water harvesting and solar energy harnessing.



Date

#### Music and Song for Children

Guest speaker

Tutorials on piano, clarinet, guitar, organ, bagpipes, a cappella



Date

#### Gardening and Pet Care

Q&A session "ask our veterinarian".

Discover healthy and fun garedn activities.  
Learn the benefits of growing your own food.  
Tips pn how to make your garden a safe place for children.  
Learn how to create a pet-safe garden and which plants to avoid.



Bring along your own pet. Take home a free plant for your garden.

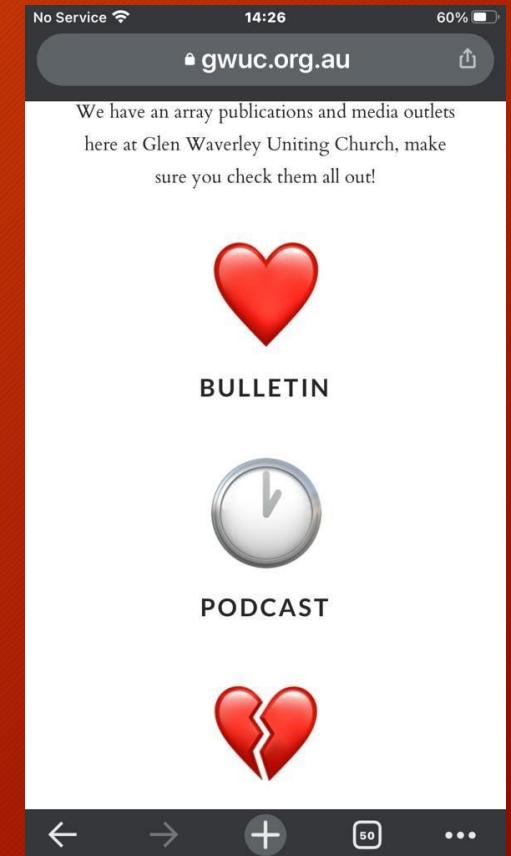
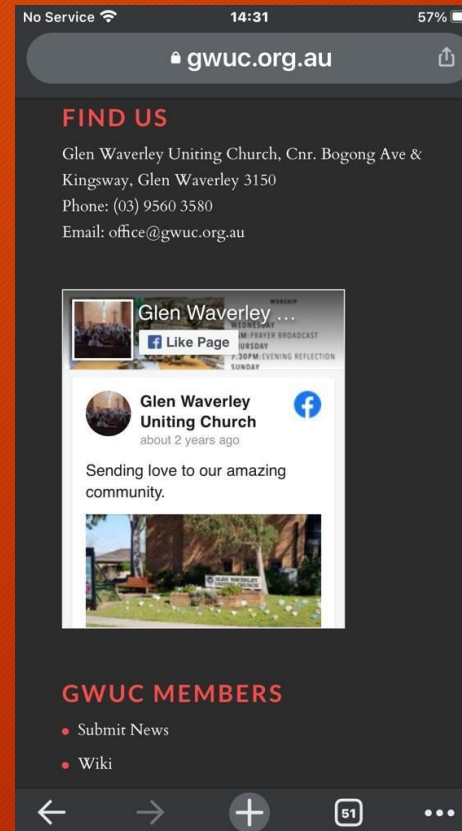
Contact: [office@gwuc.org.au](mailto:office@gwuc.org.au) Telephone (03) 95603580

Courtesy David Fraser



# Project 3: Digital Ministry

- FOUNDATION
- To find ways to build our digital ministry



## ... 3. Digital Ministry

- **RATIONALE**

Social media:

easy, effective way for ministers/ churches to engage with their congregations & beyond



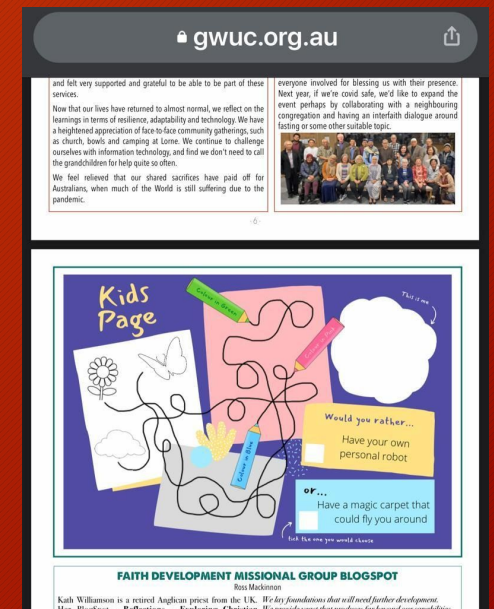


# ... 3. Digital Ministry

- RATIONALE

can be used by people who might otherwise be isolated:

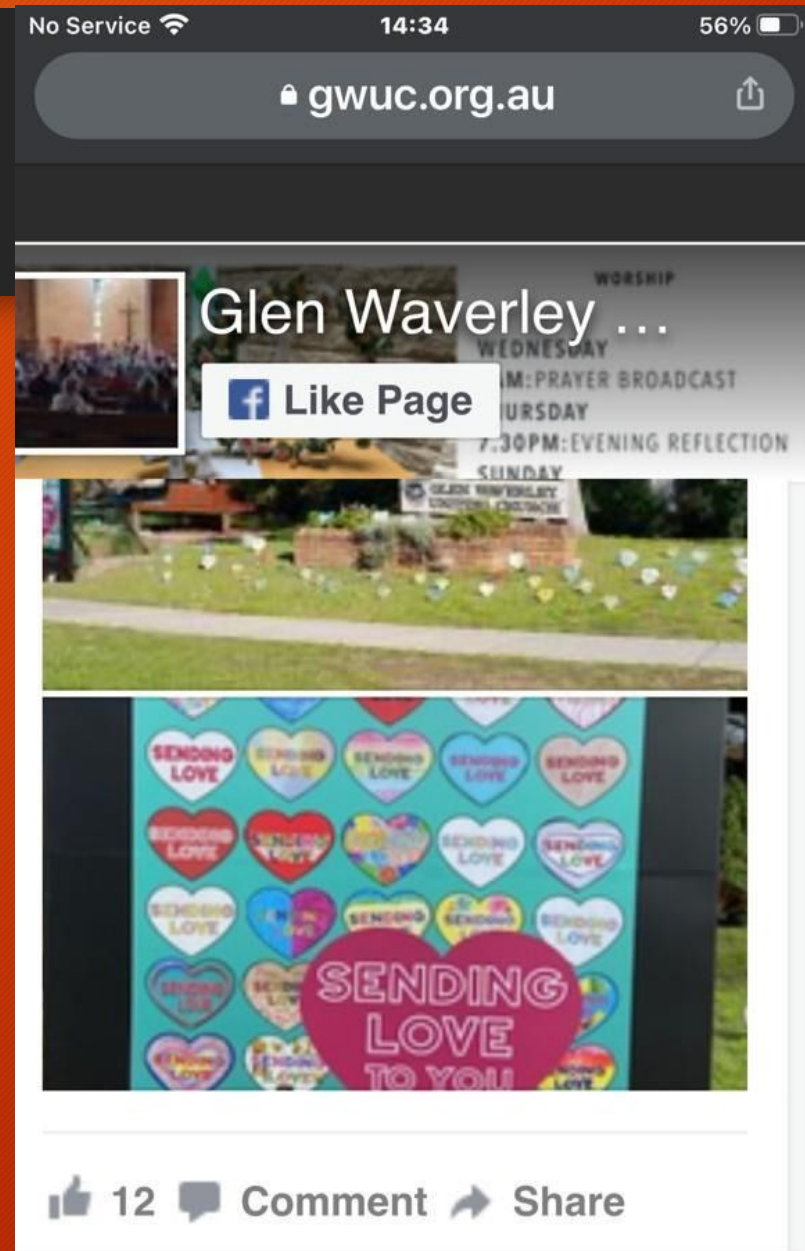
- e.g. stay at home mothers with young children.



## ... 3. Digital Ministry

### RATIONALE

- to support existing groups within congregation
- for sharing between congregation group members



# ... 3. Digital Ministry

## RATIONALE

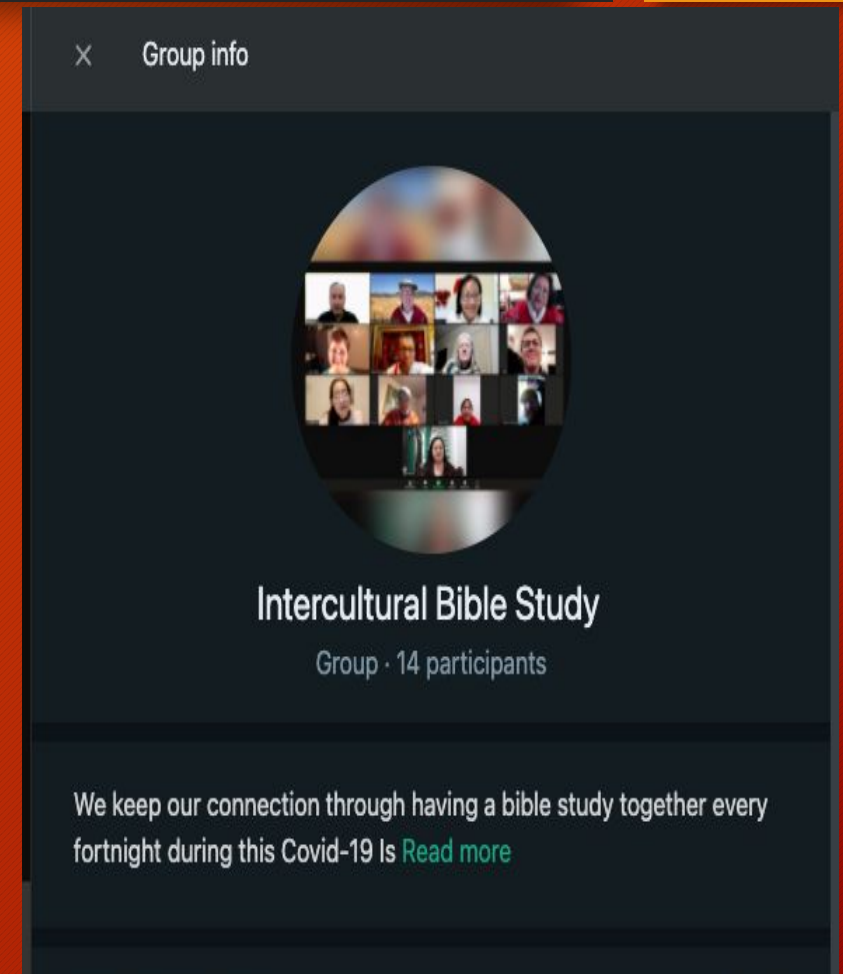
as a faith development tool, for online study



## ... 3. Digital Ministry

### RATIONALE

e.g. Advent studies, Lenten studies, Bible Study.



## ... 3. Digital Ministry

provides an outlet for virtual sharing of projects: e.g.

- water harvesting, solar power installation
- Choir of Hope
- Welfare initiatives, etc



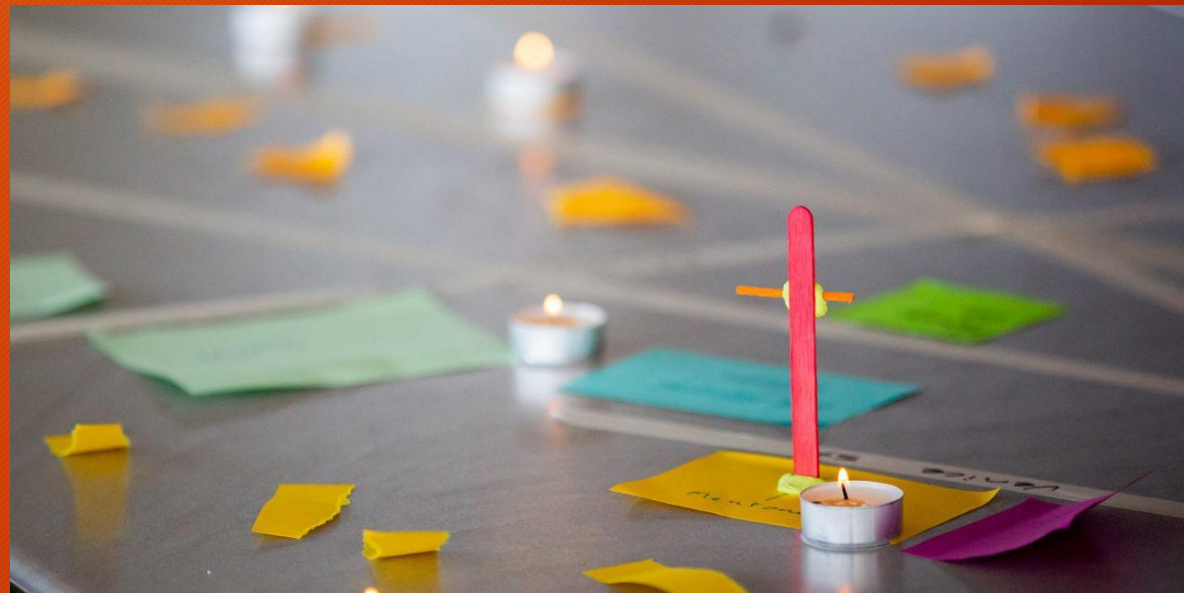
## ... 3. Digital Ministry

- To promote events: Easter and Advent programmes
- e.g. Christmas installation
- concerts
- fundraising events like the book fair and fete



# Project 4: Outreach to the Glen Waverley Community

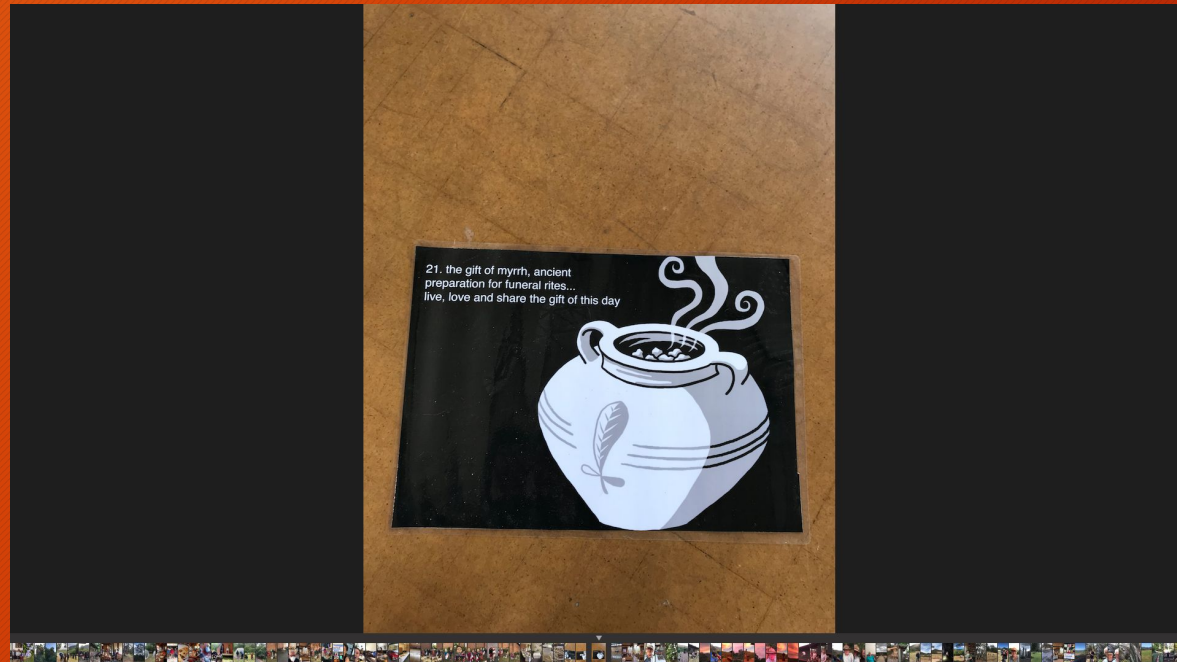
Presbytery inspired  
GWUC Missional Pilot  
Project began during  
COVID and a team  
assembled



# Project 4: Outreach to the Glen Waverley Community

One third of our local community has been here less than 15 years

New arrivals are significantly from East and South Asia





# Project 4: Outreach to the Glen Waverley Community

The local community is 10% below the national average of Christian fraction.



# Project 4: Outreach to the Glen Waverley Community

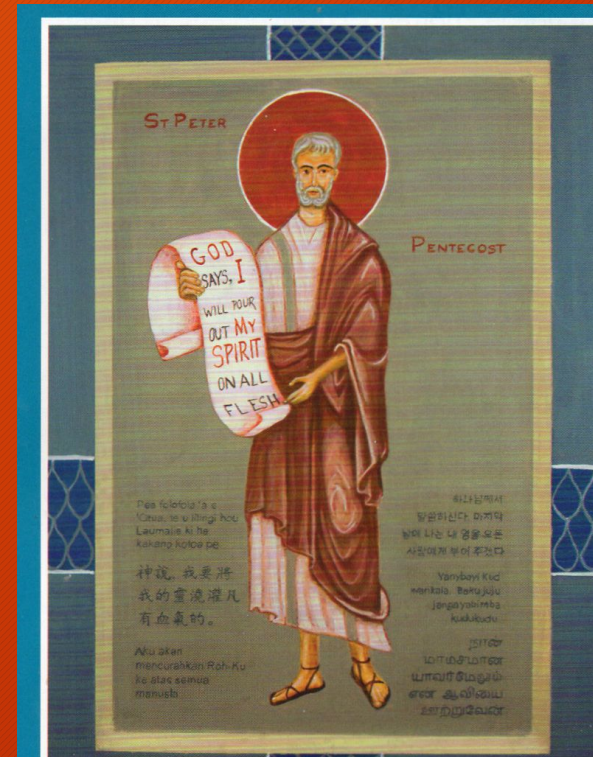
New arrivals are often education focused on both secondary and tertiary studies



# Project 4: Outreach to the Glen Waverley Community: How do we get to know the new-comers in our area?

## VISION

Mission Pilot group is exploring possibility of holding an outside event day at GWUC

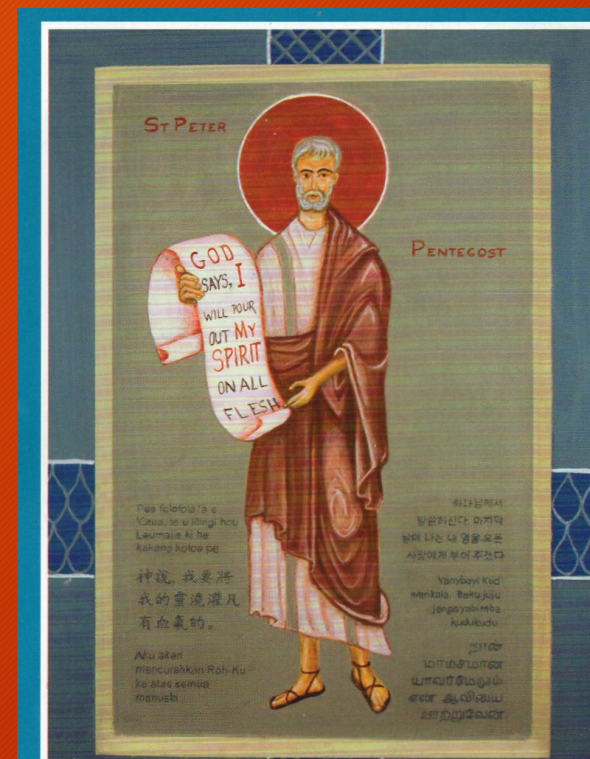


# Project 4: Outreach to the Glen Waverley Community

## VISION

### Aims:

- to grow GWUC connections with local community
- to help people ease back into social interaction



# Where to from here?

Today is to invite you to:

- **Become involved**
- take up the vision
- share/ discuss ideas that inspire you
- Together can we bring more developed proposals to congregation on March 6<sup>th</sup>?

