

**Ivan's Pies - Tuesday 25 June.**

Pie orders may be collected from the Church Hall on Tuesday 25 June between 2 and 6pm. Many thanks for your generous support of the Tennis Club.

Eileen Scott - 9800 4005.

**Wedding Invitation - Saturday 20 July.**

Bev Peacock and Jim Leishman wish to invite you to join their marriage celebration at St Leonard's Catholic Church, 349 Springvale Rd, Glen Waverley at 2pm on Saturday 20th July 2013. The service will be followed by Afternoon Tea in the Parish Community Centre until 5pm. Please, no confetti and no gifts. If you are coming, please put your name(s) on the list on the Office counter for catering purposes by Monday 8th July.

**UCAF - Tuesday 2 July.**

We will meet for morning tea at 10am and General Meeting at 10.30am in room one. The guest speaker will be Janine Evans from International Children's Heart foundation speaking on Blue Babies in Bad Places. Janine is the daughter of Betty Evans, a long time member of UCAF. All Welcome. Goods collected this month are for Cara. Enquiries: Diana Coles 9874 6457.

**CAE Book Group - Wednesday 3 July 8pm.**

The CAE Book Group is meeting at the home of Graeme Frecker, 21 Atheldene Drive, Glen Waverley. 9560 4849.

**Wisdom's Feast - Friday 19 to Monday 22 July.**

Wisdom's Feast is a key learning event within the life of the CTM and we want to invite you to think about attending. Wisdom's Feast features keynote lectures, workshops, gentle times of response, fast and furious talks, bible study that engages the arts, a film night and lots of time for conversation. Keynote presenters are noted biblical scholars Tom Wright from the UK and Liz Boase from Adelaide. Workshop leaders include staff of the CTM, the Commission for Mission and ministry practitioners. There are various packages available; a weekend package, live streaming of keynote lectures and full four day package. We look forward to feasting with many of you. Register and for more information at <https://ucavt.goregister.com.au/wisdomsfeast2013>

**GLEN WAVERLEY UNITING CHURCH**

Cnr Bogong Avenue & Kingsway,  
Glen Waverley, VIC, 3150

Office Hours: Mon-Fri 9am - 5pm  
(except Public Holidays)

9560 3580  
office@gwuc.org.au  
gwuc.org.au

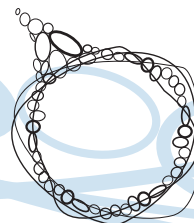
**MINISTRY TEAM**

REV. GREG FRY  
9561 3031 gjandco@bigpond.net.au

ALISON CLARKSON - SENIORS  
9560 3167 madingwall@optusnet.com.au

ALANEE HEARNshaw - YOUTH & YOUNG ADULTS  
0402 030 342 alanee.h@gmail.com

BELINDA CLEAR - CHILDREN & FAMILIES  
0400 559 423 baclear@bigpond.com



# Glen Waverley

## Uniting Church

**Welcome to Our Church**

*GWUC is a faithful, Christ-centred community that meets God and shares that unconditional love: [meet\\_god@anytime.with.us](mailto:meet_god@anytime.with.us)*

*If you're new to our congregation, please say hello at the welcome table in the foyer after the service.*

TODAY	SUNDAY JUNE 23	<i>Pentecost 5</i>
8.00am	Contemplative Worship - Communion	Rev Brace Bateman
9.15am	Interactive	Rev Greg Fry
11.00am	Traditional	Rev Greg Fry
4.30pm	Family Worship	Belinda Clear
7.00pm	Creative	Alanee Hearnshaw

Today's 9.15am service is being recorded

1 Kings 19:1-4, (5-7), 8-15a; Psalm 42 & 43; Galatians 3:23-29; Luke 8:26-39

**SUNDAY JUNE 30***Pentecost 6*

10.00am	Combined Service including Greg Fry's Cutting of the Pastoral Ties	Rev Greg Fry Alanee Hearnshaw
---------	---	----------------------------------

2 King 2:1-2, 6-14; Psalm 77:1-2, 11-20; Galatians 5:1, 13-25; Luke 9:51-62



## What's on this week?

(Legend: R1-Room 1, R2-Room 2, R3-Room 3, R4-Room 4, K-Kitchen, F-Fellowship Area, C-Church, H-Hall, V-Vestry, O-Outside Venue)

### Monday 24 June

10.00	am	Playgroup	R2/R3	Enq: Office 9560 3580
10.00	am	Leisure Time	O	Enq: Margaret Fraser 9803 7653
7.30	pm	Mandarin Fellowship	R4	Enq: Jit Tan 0400 607 053
7.30	pm	Meditation	O	Enq: Graeme or Bobbie 9803 0379
8.00	pm	Badminton	H	Enq: Ian McMillan 9803 1813

### Tuesday 25 June

10.00	am	Playgroup	R2/R3	Enq: Office 9560 3580
10am - 2pm		The Hub	F	Enq: Judith Greenwood 9803 8373
11.00	am	UCAF Executive Mtg	V	Enq: Diana Coles 9874 6457
2pm - 6pm		Tennis Club Pie Drive	H	Enq: Eileen Scott 9800 4005
7.30	pm	JNC Meeting	R1	Enq: Vida Foo 9884 1588
8.00	pm	Encounter Bible Study	O	Enq: Lois Hosking 9560 1981

### Wednesday 26 June

10.00	am	Playgroup	R2/R3	Enq: Office 9560 3580
10am - 12noon		The Hub	F	Enq: Judith Greenwood 9803 8373
8.00	pm	Free Spirit	C	Enq: Deb Leigh 0411 778 417
8.00	pm	Young Adult Group	O	Enq: Alanee Hearnshaw 0402 030 342

### Thursday 27 June

9.45	am	Ladies Fitness Group	H	Enq: Jenni Halliwell 9728 5550
10am - 2pm		The Hub	F	Enq: Judith Greenwood 9803 8373
8.00	pm	Badminton & T/Tennis	H	Enq: Ian McMillan 9803 1813
8.00	pm	Uniting Voices	C	Enq: Barbara Hurst 9803 9346 Elwyn Pederson 9803 1378

### Friday 28 June

9.30	am	Lectionary Group	R2	Enq: Office 9560 3580
10.30	am	Story Hub	C	Enq: Belinda Clear 0400 559 423
12.00	pm	Cohee Scrabble Group	F	Enq: Sandy Whitfield 0417 597 144
5.30	pm	Uthies	H	Enq: Belinda Clear 0400 599 423
7.00	pm	Youth Group	O	Enq: Alanee Hearnshaw 0402 030 342

### Saturday 29 June

1.00	pm	Social Tennis	O	Enq: Graeme Pratt 9560 7991
------	----	---------------	---	-----------------------------

## Today's Flowers in the church

Arranged by: Glenis Dunn.



### Concluding of Placement & Farewell to Greg - Sunday 30 June.

Greg Fry's last service at GWUC will be on Sunday June 30th - this service will be a combined service at 10am, during which formal recognition of Greg's conclusion of ministry will take place. If you wish to contribute towards a gift for Greg, please see Faye Wagon, Alanee Hearnshaw or leave your contribution at the church office. Following the service there will be a light luncheon. Please bring a plate of sweet (cake, biscuits, fruit) to share.

MEMORY BOOK - Want to leave a personal message? Pick up an 'iPad' card from the office counter and write your message. Please leave completed cards in the box on the office counter by Thursday 27 June. These will be collected and put together as a gift for Greg and Judy.

### Congregational Meeting - Monday 1 July

A reminder that the next Congregational Meeting will be held on Monday 1 July. If you have any items for the agenda please pass these on to Neil Skilton or the office as soon as possible.

### Forum on Building the Community of Love

If you were unable to attend the Forum on Wednesday 19 June, some DVD copies of the presentations are available to borrow from the Church Office.

### Welfare Request

Welfare Committee is seeking a second hand laptop computer for a secondary school student who attends this Church. IF you can assist, would you please contact Dorothy Lockhart on 9802 8461 or [dm.lockhart@bigpond.com](mailto:dm.lockhart@bigpond.com)

### Walk for Life.

Greetings from Walk for Life, a program run by the Glencoe Foundation. Our latest newsletter is on the notice board and we are still growing; we are now standing on more than 12000 corrected feet. This is a humanitarian program run in Bangladesh for children born with club feet. It is a very prevalent occurrence caused by the expectant mothers drinking water with a high content of arsenic in it.

Mr Stewart Goodman spoke at a recent Adult Group Meeting and Glencoe sent a letter of appreciation for the donations made that evening and thanks for assisting to change the lives of these children.

Website: <http://www.walkforlife.org.au>