

## Thanks

Many thanks to those GWUC people who attended Free Spirit's concert in support of asylum seekers. You helped us to raise nearly \$1500 for asylum seeker accommodation.

### UCAF - Tuesday 2 October - 10am

Please join us for morning tea at 10am followed by guest speaker Barbara Higgins, a former minister of this congregation, who will speak to us on "One Woman's Voice from Ancient Times". Contact: Jacqui King, 9560 3147.

### Mens Fellowship - Tuesday 2 October - 2pm

Guest Speaker: Rev Dr Warren Bartlett. Contact: Malcolm Chamberlain 9764 0975.

### CAE Book Group - Wednesday 3 October - 8pm

The CAE Book Group will meet at the home of Elwyn Pederson, 23 Silverwood Way, Glen Waverley. Phone 9803 1378. Please note change of venue.

### Adult Group - Friday 5 October - 8pm

All are welcome to hear Ken Vogel (ex pilot with the Missionary Aviation Fellowship, based in Papua New Guinea. He is an excellent speaker and will be supported by screen pictures. Supper will follow.

Enquiries: Bobbie or Graeme 9803 0379.

### Ride To Conquer Cancer: Supporting The Peter MacCallum Cancer Centre

The ride to conquer cancer is a cycling event taking place in October that will see brave cyclists travel over 200km in just two days. Andrew Wheatland and his friends are participating in the ride with the goal of raising \$16,200 for charity. Money raised benefits the Peter MacCallum cancer centre, so that they may continue to provide the highest level of care, and develop new treatments for cancer sufferers.

To show your support for Andrew's team, please visit the team website: [www.lycralovinteam.org.au](http://www.lycralovinteam.org.au) All donations are tax deductible.

#### GLEN WAVERLEY UNITING CHURCH

Cnr Bogong Avenue & Kingsway,  
Glen Waverley, VIC, 3150

Office Hours: Mon-Fri 9am - 5pm  
(except Public Holidays)

9560 3580  
[office@gwuc.org.au](mailto:office@gwuc.org.au)  
[gwuc.org.au](http://gwuc.org.au)

#### MINISTRY TEAM

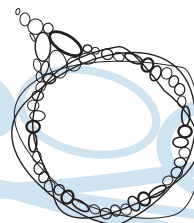
REV. GREG FRY  
9561 3031 [gjandco@bigpond.net.au](mailto:gjandco@bigpond.net.au)

REV. ROSEMARY CARTER  
9560 9843 [rosemary.carter@internode.on.net](mailto:rosemary.carter@internode.on.net)

JAN CLEAR- SENIORS (INTERIM)  
9803 6820 [bclear@bigpond.net.au](mailto:bclear@bigpond.net.au)

ALANEE HEARNshaw - YOUTH & YOUNG ADULTS  
0402 030 342 [alaneeh@gmail.com](mailto:alaneeh@gmail.com)

BELINDA CLEAR - CHILDREN & FAMILIES  
0400 559 423 [baclear@bigpond.com](mailto:baclear@bigpond.com)



# Glen Waverley

## Uniting Church

## Welcome to Our Church

*GWUC is a faithful, Christ-centred community that meets God and shares that unconditional love: [meet\\_god@anytime.with.us](mailto:meet_god@anytime.with.us)*

*If you're new to our congregation, please say hello at the welcome table in the foyer after the service.*

TODAY	SUNDAY SEPTEMBER 23	<i>Pentecost 17</i>
8.00am	Contemplative - Communion	Rev Rosemary Carter
9.15am	Interactive	Rev Greg Fry
11.00am	Traditional	Rev Rosemary Carter
4.30pm	Family Worship	Rev R Carter & Belinda Clear
7.00pm	Creative	Neil Skilton & Bec Wetering

Today's 9.15am service is being recorded

Proverbs 31:10-31; Psalm 1; James 3:13 - 4:3, 7-8a; Mark 9:30-37

#### SUNDAY SEPTEMBER 30

*Pentecost 18*

10.00am	Combined Service Frontier Services Centenary Celebration	Rev Dr Warren Bartlett & Rev Clem Dickinson
---------	--	--

Isaiah 61:1-4; Isaiah 40:1,3-5; Mark 1:1-8



## What's on this week?

(Legend: R1-Room 1, R2-Room 2, R3-Room 3, R4-Room 4, K-Kitchen, F-Fellowship Area, C-Church, H-Hall, V-Vestry, O-Outside Venue)

### Monday 24 September

10.00	am	Frontier Services Display	H	Enq: David Williams 9803 1285
10.30	am	Leisure Time	O	Enq: Margaret Fraser 9803 7653
7.30	pm	Meditation	O	Enq: Bobbie Rooks 9803 0379
7.30	pm	Communications	R2	Enq: Lesley Armstrong 9560 9003
8.00	pm	Badminton	H	Enq: Ian McMillan 9803 1813
8.00	pm	Young Adult Group	O	Enq: Helen Boucher 0418 551 869

### Tuesday 25 September

9.00	am	Ladies Social Tennis	O	Enq: Eileen Scott 9800 4005
10.00	am	Frontier Services Display	H	Enq: David Williams 9803 1285
11.00	am	UCAF Executive	V	Enq: Jacqui King 9560 3147
7.00	pm	Camberwell Bible Study	R4	Enq: Jit Tan 0400 607 053
8.00	pm	Encounter Group	O	Enq: Lois Hosking 9560 1981

### Wednesday 26 September

10.00	am	Frontier Services Display	H	Enq: David Williams 9803 1285
7.30	pm	9.15 Worship Band	R3	Enq: Dean Mann 9800 1768
8.00	pm	Free Spirit	O	Enq: Deb Leigh 0411 778 417
8.00	pm	Young Adult Group	O	Enq: Alanee Hearnshaw 0402 030 342

### Thursday 27 September

10.00	am	Frontier Services Display	H	Enq: David Williams 9803 1285
11.00	am	Story Hub	F	Enq: Belinda Clear 0400 559 423
1.30	pm	Scots Glen Singers	H	Enq: Heather Francis 9878 1979
8.00	pm	Badminton/Table Tennis	H	Enq: Ian McMillan 9803 1813
8.00	pm	Uniting Voices	C	Enq: Elwyn Pederson 9803 1378

### Friday 28 September

9.30	am	Lectionary Group	R2	Enq: Office 9560 3580
12.00	pm	Cohee Scrabble Group	F	Enq: Sandy Whitfield 0417 597 144

### Saturday 29 September

1.00	pm	Social Tennis	O	Enq: Graeme Pratt 9560 7991
------	----	---------------	---	-----------------------------

### Please note ...

Alanee Hearnshaw is on sick leave for the next couple of weeks. Please contact the office if you need assistance.

## Today's Flowers in the church

Arranged by: Kaye Mackinnon



### Today ...

Please collect your Growing Generous Givers Letter from the table in the Foyer. Please check, take your and any you can deliver. Please check the name and address carefully and advise the Office of any changes necessary.

Copies of NewView are also available today. Please share this with someone once you have read it.

### Invitation

Timothy Laub and Philippa Hillman would like to welcome anyone who would like to attend their wedding.

Please join with them at 11am on Saturday 6 October 2012 at the Glen Waverley Anglican Church, 800 Waverley Road, Glen Waverley.

### Christmas Services "Big Picture" Planning Meeting

Don't panic ... BUT ... Christmas is coming!

TODAY from 12:30pm - 1:30pm in Room 1 there will be a meeting for people involved in the leadership of worship of the Advent-Christmas Service. If you are involved in the music leadership, Vestry elders, interested in visual helps for worship or Bible story-telling or would otherwise like to be involved, you are invited to attend. Bring a sandwich to eat while we explore together.

### Combined Service for Advent 1 (2 December)

If you are interested in helping to plan this service please contact either Rosemary (9560 9843) or Greg (9561 3031).

### A fantastic creative and inspiring opportunity!

Seasons of the Spirit is offering an opportunity to help develop resources for worship to share with the world. Glen Waverley Uniting Church has been asked to explore, discuss, create, prepare, develop and write resources for Seasons of Creation and Pentecost 2 for 2014.

Planning times will be Sunday 28 October 1-4pm; Monday 29 October 6.30-10pm; Tuesday 30 October 7-10pm; and Saturday 3 November 9.30-5pm.

To register, and for more information, contact Rosemary Carter on 9560 9843 or 0431 286 285.

Alternatively, please email [office@gwuc.org.au](mailto:office@gwuc.org.au) with the subject header SPIRIT.

Please RSVP your interest by TODAY Sunday 23 September.