



# Uniting Church in Australia

## Glen Waverley Congregation

### Monthly Bulletin – September 2011



GWUC is a faithful, Christ-centred community that meets God and shares that unconditional love:

[meet\\_god@anytime.with.us](mailto:meet_god@anytime.with.us)



- **Sunday 2 October**—Club 2011
- **Sunday 9 October**—Ministry to Seniors at 2.30pm
- **13 October** - Special Morning Tea at the Hub—Seniors' Week
- **12 November** - 'Fun Night fundraiser for Kenya' - 7.30 pm.
- **27 November** - 20th Birthday of our building. Any slides, photographs and or recollections of that special day would be very much appreciated. Please contact Jan Clear if you can contribute to any of the above.
- **1 December** - Special morning tea at the Hub on Thursday 1st December at 10.30am. (The church was opened on 1st. December 1991. )

# Community Outreach Group

## **BRENTWOOD SECONDARY COLLEGE**

It's a couple of years since we told you about Brentwood's caring of the "whole" student, not just fostering their academic abilities.

Brentwood employs a Chaplain, a Social Worker and a Student Wellbeing Coordinator who oversee the following needs (as well as much more):

Volunteers for the "professionals in residence" mentoring program,

Money for an emergency fund for short term immediate student needs,

Mentors for 5 hours over the school year to mentor students from Years 11 and 12, and

Safe homes for emergency accommodation and quiet areas for studies.

All these programs are voluntary.

You may have noticed Students "coming and going" from the 17 Southdown Manse. Some of these are Brentwood Secondary students and some are from Glen Waverley Secondary receiving support and programs provided by G.W.U.C.

Alanee is the contact between G.W.U.C. and Brentwood so talk to her if you would like to volunteer your support.

## **CHERYL EMMS - COP 2010**

If you were present at the 10am Outreach Service on Sunday 31<sup>st</sup> July you would have shared in the COP presentation to Cheryl.

The following is an update provided by Yan – thanks Yan.

*Just letting everyone know that Cheryl has arrived safely at her posting after a bumpy start on the Wednesday morning when Tullamarine Freeway was closed off for road-works and traffic was banked up even at 6am.*

*We have not heard how the work is going but were told that her neighbours had thoughtfully stocked up her fridge with food essentials prior to her arrival.*

*We are very grateful that she has people around who are caring and that her accommodation has Internet!!*

The weather is hot and probably made more severe as she is coming from our wintery conditions. She was really pleased that the comforts like an air conditioner are available.

**Lyn McDonald**, email: lynmcd@chariot.com.au

# Community Outreach Group

## MISSION ~~IM~~POSSIBLE

### **Charlton Visit, 25 & 26 August 2011**

We took up to Charlton:

23 + 1 fruit cakes,

31 bundles of biscuits,

9 casseroles/lasagne,

9 containers of soup,

all of which were Home Made (except the +1).

*Thanks for your food donations.*

We joined in the fortnightly Afternoon Tea. Good to hear the chatter of 50 people sharing together over coffee and cake.

We visited some homes, handed out some “goodies”, heard their stories and saw the astounding “evidence” of the flood.

There is a good community spirit in the town and some people are able to get on with repairs to their homes, whilst others can't.

**G.W.U.C.'s efforts are appreciated.**

### **Fun Night**

Please keep the Saturday night 12 November free for a night of fun and friendship. It's a fundraiser for Kenya.

See flyer elsewhere in this Bulletin.

**Steve Fraser** is doing a 35km charity ride on 13th November to raise funds to help homeless in Victoria. To support his cause please visit  
[http://www.rideforhome.com.au/fundraising/Steven\\_Fraser.aspx](http://www.rideforhome.com.au/fundraising/Steven_Fraser.aspx)

## **Inclusive Community Report- September 2011.**

On Wednesday 10<sup>th</sup> August, members of our committee and representatives from the Community Hub committee met with Rev. Hoon You and began to prepare for the service on Sunday 30<sup>th</sup> October. We were glad to welcome Joy Jackson, as a new committee member and we thank her for her willingness to join us. We met again a week later and finished service preparations. We will have lunch after this service and Hoon and his family will be our guests. (a diary date) Our normal committee meeting will be held in September and we will put the time and date in the weekly bulletin.

Our next “Munch with a Bunch” lunch will be held on Sunday 23<sup>rd</sup> October. (Please put this new date in your diary.) We haven’t decided on a venue but we will put a notice in the weekly bulletin, when a decision is made.

We enjoyed morning tea at Café Moretti on Wednesday 17<sup>th</sup> August. There were only five of us but we had a lovely time catching up and the muffins were delicious. Our September morning coffee will be at the Hub on Thursday 22<sup>nd</sup> September. This will be the day before the start of the next school holidays so come and enjoy quality time with your friends before the grandchildren arrive and your peace is shattered!!!

I would like to thank Jack Bartlett for his enthusiastic attempts to organise functions for Green F.I.S.H. Jack finds that he is unable to continue doing this so we would love to have some new members for this group and someone who would be happy to be the convenor. Talk to me if you would like some more details.

The 20<sup>th</sup> Birthday Celebrations for our building will be held on Sunday 27<sup>th</sup> November at 10am. This will be a combined service and there will be a spit roast lunch following the service. We will also have a special morning tea at the Hub on Thursday 1<sup>st</sup> December at 10.30am. (The first service in this building was on Sunday 1<sup>st</sup> December 1991.) Put these dates in your diary and we will give you more details, in the weekly and monthly bulletins, as arrangements are made.

Jan Clear

## **MINISTRY TO SENIORS**

**Worship with us on  
Sunday 9 October 2011  
2.30pm**

**Celebrating Seniors' Week**

**Leader: Alison Clarkson**

Afternoon tea will be served after the service.

Transport will be available. If required please contact G.W.U.C.  
Office: 96503580 by Wednesday 5 October.

## **Club 2011**

2nd October - 1<sup>st</sup> Sunday every Month Club 2011  
Fellowship/Luncheon 12.30pm Share a plate of food and fellowship.

Don't go home to an empty house. Join us at Club 2011.

Enquiries Joy Gray 9560 7373.

## **SPECIAL MORNING TEA**

at  
**THE HUB**  
for  
**SENIORS' WEEK**

**Thursday 13th October 10am – 12noon**

Come and share morning tea with our seniors  
who volunteer their time to help in our church and  
our community in so many different ways.

Surprise entertainment!

Bring your family and friends.  
**ALL AGES WELCOME**

If you are coming it would be helpful if you could please  
add your name to the list on the shelf outside the office.

# **COMMUNITY HUB**



Our first “Muffin Morning” was held at The Hub on Thursday 11<sup>th</sup> August. Over 50 people enjoyed a lovely morning chatting and eating muffins. The variety of muffins baked by The Hub volunteers was great and they were so delicious that some people tasted a few different kinds. Thank you very much to The Hub volunteers who baked muffins, helped in the kitchen and helped with setting up and packing up on the day.

A meeting and lunch for all Hub volunteers and anyone interested in The Hub will be held at the church on Sunday 11<sup>th</sup> September at 12.30pm. Please bring a plate of food to share.

The Munch with a Bunch group will be having morning tea at The Hub on Thursday 22<sup>nd</sup> September. We look forward to seeing them again then. Other people are also welcome to drop in at The Hub on this day.

Our next Big Morning Tea at The Hub will be held on Thursday 13<sup>th</sup> October when we will be having a Special Morning Tea for Seniors’ Week. Come and share morning tea with our seniors who volunteer their time to help in our church and our community in so many different ways. It will be from 10am – 12noon with special surprise entertainment. People of all ages are welcome. We would love you to come and bring your family, friends and neighbours. If you are coming it would be helpful if you could please add your name to the list on the shelf outside the office.

Would you like to come and join us at The Hub for a cuppa and a biscuit, a chat or some company on a Tuesday or a Thursday, from 10am – 2pm? We would love to see you.

If you would like to help at The Hub or know more about The Hub, please contact Judith on 98038373.

### **Project Update from Baguia -Timor Leste**

During July we (Judy and Murray Lowe) were fortunate to spend several weeks in Timor Leste, in the middle of our 3 month Long Service Leave holiday. We returned to Baguia to reconnect with our Timorese friends and to assist with a number of projects being supported by G.W.U.C. through the Friends of Baguia organisation.

### **Tanks for Timor**

After frustrating delays in 2010 due to an unusually wet “dry season” which closed the only access road to Baguia, the water tanks finally made it to the 3 small mountain village schools - Gulari, Ossofulari and Bubuha – while we were visiting. Each tank was transported by truck to the closest access point to each village and then the village community carried the tanks and spouting up to their villages, often taking several hours, up steep mountain slopes. The enthusiastic welcomes we received at each village, made it clear that these communities greatly valued this project which was funded and enabled by the G.W.U.C. community.

### **Baguia Kindergarten Teacher Salaries**

We were delighted to see the Baguia Kindergarten in operation in a recently refurbished community building, with voluntary teachers. The kinder is operating 5 days a week providing an introduction to schooling for over 30 village children. Our Congregational Outreach Project fund raising this year is providing the funding to pay the salaries of the 6 part time kinder. teachers and will enable them to access appropriate teacher training.

### **Ossofulari Primary School Teacher Salaries**

This small mountain village was provided funds to construct a school building several years ago but nothing for the ongoing cost of teacher salaries. The school had been struggling along using volunteer labour while seeking funding. Last year some of the C.O.P. funds went towards teacher salaries. Their salaries give them the means to obtain teaching qualifications, after which the government should step in with funding, putting the school on a sustainable footing. We spent several enjoyable hours visiting the school and talking with the teachers.

### **School Desks and Chairs**

On their first visit to Baguia, Judy and Meagan took with them money raised by our Youth, through the sale of soft drinks. This money was provided to Bubuha Primary School for the construction of desks. Back then the 80 children at this school took all their lessons sitting on the earthen floor of the simple 3 room building. When we visited the school on the day the water tank was delivered, we were proudly shown the desks, built by a local carpenter. While in Baguia we were also able to see some of the 300 chairs, in use, that we shipped to Timor following their donation by Scotch College. Many at G.W.U.C. were involved in packing and transporting the chairs several times before they were finally shipped by Rotary to Timor.

We look forward to sharing more of our experiences with you. Your generous assistance to this community has been wonderful and the people of Baguia have asked us to pass on their very sincere thanks for all your support.

Judy and Murray Lowe

# **Connections Uniting Care**

## **Seeking Board Members**

Do you have an interest in the wider mission of the Uniting Church?

Would you be interested in contributing to the work of Connections Uniting Care? We are seeking expressions of interest from suitably skilled and experienced members of the Uniting Church to join our Board of Governance. Members with skills in management, finance, human services or government administration would be of particular relevance as would skills in strategic planning or marketing.

*Expressions of interest: Chairperson Fiona Hanlon– [chairperson@connections.org.au](mailto:chairperson@connections.org.au)*

*Further information– Executive Assistant to the CEO June Roy– 9271 0800*

## **Generous Giving Month**

October is to be our Generous Giving month. This will a time of thanksgiving for the evidence of God's Grace to us in so many ways. We are blessed with a wide variety of opportunities to demonstrate love, compassion and justice, through the various missions and ministries we conduct.

The Fete on 15<sup>th</sup> October is a great demonstration of the whole congregation working together and we will celebrate this on October 16<sup>th</sup>. In so many other ways we give of our money, abilities and time to ensure that the God's work goes on.

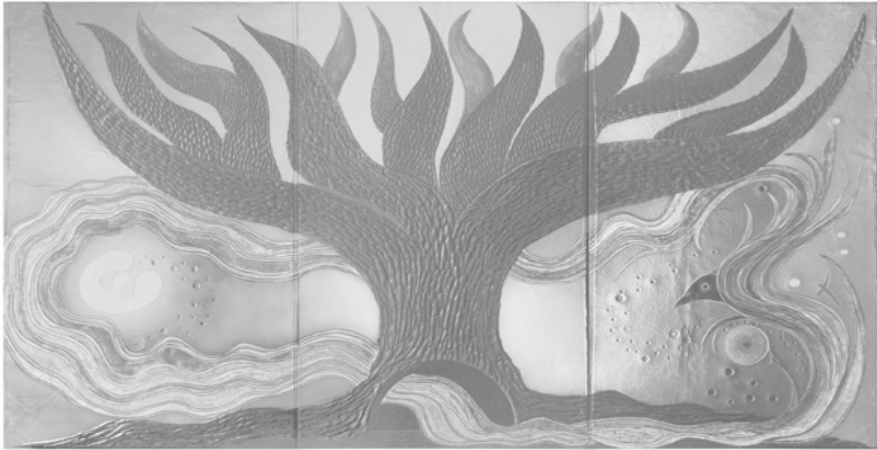
Thus, throughout October, we will be challenged about our Giving. The services will follow the four themes from our On the Way Together focus. There will be a guest preacher on October 23<sup>rd</sup>. The Hub and Inclusive Community Missional groups will lead us in worship on the 30<sup>th</sup>.

Accompanying this we will be challenged about our committed giving for the year ahead. Material will be available in early October for you to take and consider what your response will be in 2012.

Roger Vass  
GGG committee.



## This Season...Season of Creation, Pentecost 2



Let the Energy Flow, (Laissez circuler L'Énergie), Isabelle Mougeot. Copyright © Isabelle Mougeot / SODRAC 2009. Used by permission, Wood Lake Publishing Inc., Seasons of the Spirit™ Pentecost 2 2011.

The energy of God's awesome, creative love flows through the two seasons of this unit of material.

During the four weeks of September, we celebrate the Season of Creation. New to *Seasons of the Spirit*, this season has been observed by many for the past eleven years. While Season of Creation has its own set of lectionary readings, the readings are designed to provide a three-year cycle that broadly corresponds to the pattern or plan of the *Revised Common Lectionary*, with each year centred on one of the synoptic gospels: Matthew (Year A), Mark (Year B), and Luke (Year C).

The readings for the Season of Creation invite us to join with all members of Earth's community to "Celebrate Earth as a sacred planet filled with God's vibrant presence" (from Season of Creation charter). The Sundays of the first year in the Season of Creation focus on the Forests, Land, Wilderness/Outback, and Rivers. The colour of the season is aqua.

Aqua, the blue-green colour of the planet Earth, gives way to the green of the Season after Pentecost, which began on June 19, 2011. This is a season of discovery and growth in relationship with the Creator and each other. In this second half of the Season after Pentecost we will accompany the Hebrew people in their long journey through the wilderness toward a new land and new life. The season ends with a focus on readings from the gospel of Matthew, and the encouragement of Jesus to live in such a way as to reflect God's vision and reign where all members of Earth's community live in harmonious relationship with God and in right relationship with one another.

The season and church year concludes with Reign of Christ Sunday/Christ the King Sunday.

May the energy of God's creative love flow in and through us.

# **Fun Night**

**Fundraiser for Kenya**

**Saturday 12 November, 7:30pm**

**Glen Waverley Uniting Church Hall**

**Families, young & old, singles, etc  
all welcome.**

**No experience necessary.**

**Supper provided.**

**Adults \$10 each, Families \$25**



**All funds raised support the Kenya project  
including food hampers,  
school supplies and school shoes**

# GLEN WAVERLEY UNITING CHURCH

Presents

## *FREE SPIRIT IN CONCERT*



*Featuring a variety of gospel style songs, jazz,  
Negro spirituals & traditional sacred music*

*Guest Artist Jacob Davey*

**Sunday 18<sup>th</sup> September 2011**

**2:00pm**

**Glen Waverley Uniting Church**

Corner Kingsway & Bogong Avenue, Glen Waverley 3150

Admission \$10.00 including Afternoon Tea

Tickets available from Church Office 03 9560 3580

or Vida (0411 246 254)

(Proceeds support our Church Programme & Activities)

## ABOUT ME



**Name:** Jacob Davey

**Age:** 18

**Education:** First year Uni

**Studying:** Arts & Science

**Hobbies:** Music,  
composing, bush walking,  
bike riding!

**Favorite places:**  
Tasmania, New Zealand &  
Dandenong Ranges

**Books/movies:** Harry  
Potter, Dan Brown, Mr Bean

**TV appearances:** Letter  
& Numbers.....Retiring  
champ & Future Finalist!

# YOUTH TERM 3



## TERM 3

**July 22: Pajama Party** - 7-9:30pm \$2  
@ GWUC (Warm (trackie's) PJ's only)

**July 29: It's your Birthday!** -  
7-9:30pm \$2 @ GWUC

**Aug 5: Small Groups** - 7-9:30pm \$2 @  
small group houses

**Aug 12: Camp Chill** - 7:30pm leave  
from GWUC!

**Aug 19: GAME SHOW** -  
7-9:30pm \$2 @ GWUC

**Aug 26: Small Groups**-  
7-9:30pm \$2 @ small group  
houses

**Sept 2: Lights Camera Action**  
7-9:30pm \$2 @ GWUC

**Sept 9: Small Groups**-  
7-9:30pm \$2 @ small group  
houses

**Sept 16: Formalish Dinner** -  
7-9:30pm \$10 meet @ GWUC &  
go to surprise location!

**Sept 23: Small groups** -  
7-9:30pm \$2 @ Small group  
houses

## Dates

For your diary

Outreach Sunday	31st July
Camp	12-14th Aug
Trivia Night	27th Aug
Fete	15th Oct
Country dance	12th Nov
Christmas lunch	11th Dec
Christmas Allight	1st & 8th Dec

## FYI

New Youth study  
group starts this week,  
friday's at Al & Joel's  
@

**5:30** pm

Sunday Evening  
Worship, creative  
interactive & thought  
provoking Sunday's @  
GWUC @

**7** pm

Small groups, places  
for you to share, learn  
& support each other,  
during youth group  
terms

**7** pm,



# UTHIES TERM 3



Uthies is a part of the Children's & Family Ministry at GWUC and aims to provide a safe and fun environment for children to build Christian community.

\$2 per night from 5:30-7pm.

## Term Dates:

### 29th July:

Blind Trust

### 12th August:

Rockstar Training

### 26th August:

Dress Up Night

### 9th September:

Letters & Numbers with guest!

(Bring a friend night)

### 23rd September (\$5)

Platinum Club Movie Night

(Bring your own bean-bags and pillows)

## Contact Details

### Neil Skilton

0432 714 759

### Meagan Lowe

0432 095 201

### Kelli Benjamin

0414 611 865

### Nick Dart

0439 102 491



GLEN WAVERLEY UNITING  
CHURCH



CNR. BOGONG AVENUE & KINGS  
WAY, GLEN WAVERLEY, 3150.



UTHIES IS OPEN TO GRADE 4, 5  
& 6 AT PRIMARY SCHOOL



## 2011 Events Calendar

<p><b>September</b></p> <p>17– 21–</p> <p><b>Synod</b></p> <p>18–</p> <p>2pm start– <b>Free Spirit Concert at G.W.U.C. (Fundraising)</b></p>	<p><b>October</b></p> <p>9–</p> <p>2.30pm <b>Senior Service</b></p> <p>13–</p> <p>10am– 12pm—<b>The Hub special morning tea– Seniors Week</b></p> <p>15–</p> <p>9am– 2pm– <b>Fete</b></p> <p>30–</p> <p>10am– <b>Combined Service</b></p>
<p><b>November</b></p> <p>12–</p> <p>7.30pm start– <b>FUN NIGHT (Fundraising for Kenya)</b></p> <p>27–</p> <p>10am– <b>Combined Service. (1st week in Advent) and the Celebration of 20 years in our building— Spit Roast lunch to follow service—watch for further information</b></p> <p>7.30pm– <b>Remembrance Service</b></p>	<p><b>December</b></p> <p>3–</p> <p>11–</p> <p>11am– <b>Senior Service</b></p> <p>12.30pm– <b>Church Family Christmas Lunch</b></p>

Note: If you are planning an event, please let Vida (0411 246 254)

# GWUC GRAND FETE

SATURDAY 15<sup>th</sup> OCTOBER, 2011

8.30am – 2.00pm

**YOUR  
DONATIONS  
towards the  
FETE  
ARE WELCOME**



PUT THURSDAY  
AFTERNOON OCTOBER 13  
& FRIDAY OCTOBER 14 IN  
YOUR DIARY AND COME  
ALONG AND HELP WITH  
'SET-UP". WORK FOR ALL -  
SO ALL WELCOME.

Need more info?  
Contact  
Murray Lowe 9885 8514  
Yan Emms 0419 365 913

Items may include: Books,  
Plants, Toys, Bric-A-Brac etc.  
Items for any stall can be delivered to the  
church on Friday October 14 - during the  
day until 9pm or Saturday morning (with very  
limited car access from 7.30am)

**PLEASE NOTE:**

Due to Public Liability risk, no electrical  
goods will be accepted or sold at the Fete.  
We are unable to accept mattresses.

Pre-loved clothes, Plants,  
Cakes, Jams, Crafts, Pre-loved  
books, Face Painting, Pizza,  
Sausage Sizzle, Asian Food,  
Devonshire Teas, Jewellery,  
\$2.00 boxes, Christmas Cards,

PEDAL CARS  
ENTERTAINMENT  
SILENT AUCTION

**FUN FOR ALL**

## PREACHING PLAN October 2011

TIME	October 2	October 9	October 16	October 23	October 30
8.00am	Rev Rosemary Carter	Ross MacKinnon	Ross MacKinnon	Ross MacKinnon	
9.30am	<b>Rev Rosemary Carter (Holy Communion)</b> Worship Planning Team: Jan Clear	<b>Rev Greg Fry/ Rev Rosemary Carter</b> Worship Planning Team: Belinda Clear, Judith and Warren Greenwood	<b>Rev Rosemary Carter</b> Worship Planning Team: Michael and Susan Stringer	<b>Rev Clem Dickinson</b> Worship Planning Team: Dean Mann	
11.00am	<b>Alison Clarkson</b>	<b>Rev Rosemary Carter</b>	<b>Rev Rosemary Carter (Holy Communion)</b>		10.00 am Combined Service Rev Hoon You Monash UC
2.30 pm		<b>Alison Clarkson Seniors' Service</b>			
4.30 pm		Family Activity	Children & Families	Children & Families	
7.00 pm	<b>Alanee Hearnshaw</b>	<b>Alanee Hearnshaw</b>	<b>Alanee Hearnshaw</b>	<b>Alanee Hearnshaw</b>	
Lectinary	Exodus 20: 1-4, 7-9, 12-20 Psalm 19 Philippians 3: 4b-14 Matthew 21: 33-46	Exodus 32: 1-14 Psalm 106: 1-6, 19-23 Philippians 4: 1-9 Matthew 22: 1-14	Exodus 33: 12-23 Psalm 99 1 Thessalonians 1: 1-10 Matthew 22: 15-22	Deuteronomy 34: 1-12 Psalm 90 1-6, 13-17 1 Thessalonians 2: 1-8 Matthew 22: 34-46	Joshua 3: 7-17 Psalm 107: 1-7, 33-37 1 Thessalonians 2: 9-13 Matthew 23: 1-12
Liturgical Colour					

*Greg on Annual Leave  
School Holidays to 9 October*

*Ministry Team 17 – 21 October Study Leave  
Fete 15 October*

*Rosemary Annual Leave  
Cup Weekend*