



**UNITING CHURCH IN AUSTRALIA
19 September 2010**



WELCOME TO GLEN WAVERLEY UNITING CHURCH

If you are new to our congregation please fill in a Visitor Card so we may have the privilege of contacting you. Cards are available at the door, at the end of the pews, and on the 'Welcoming Table' in the foyer.

Please make yourself known to one of our members and join us for a 'cuppa' between services.

Vision Statement:

GWUC is a faithful, Christ-centred community that meets God and shares that unconditional love. meet_god@anytime.with.us

<u>SUNDAY 19 September</u>	Pentecost 17
8.00 am	<u>Ross Mackinnon</u> (Holy Communion)
9.00 am	<u>Rev Greg Fry</u> Choir
11.00 am	<u>Rev Ineke Gyles/Alison Dingwall</u> (Holy Communion) Seniors' Service
<u>No 4.30 pm service - School Holidays</u>	
7.00 pm	Philip Lierich—Café style—Luke storytelling
<u>Lectionary</u>	Jeremiah 8: 18-9: 1, Psalm 79: 1-9 1 Timothy 2: 1-7, Luke 16: 1-13

<u>SUNDAY 26 September</u>	Pentecost 18
8.00 am	<u>Peter Baker</u>
9.00 am	<u>Rev Ineke Gyles</u> Worship Band
11.00 am	<u>Rev Ineke Gyles</u> Choir
<u>No 4.30 pm service - School Holidays</u>	
7.00 pm	Youth and Young Adults Worship
<u>Lectionary</u>	Jeremiah 32: 1-3a, 6-15, Psalm 91: 1-6, 14-16 1 Timothy 6: 6-19, Luke 16: 19-31



Today's 'Thoughtful Flowers'
In memory of dearly loved Parents
Always missed - never forgotten.
Resting in God's tender care
Ann and Don Wylie

After 15 months of discussion and discernment, Church Council on-Wednesday night approved a change affecting the 9.00am worship. The last 9.00am worship will be a celebration on November 21st. A different form of worship will commence on February 2nd at 9.30am. More details will be shared with you over the coming weeks. Worship at 8.00am, 11.00am, 4.30pm and 7.00pm will continue.

As part of the **Monash Seniors Festival**, there will be a Positive Ageing Lifestyle Expo held on Wednesday 29th September at Treseder Hall, Glen Waverley Secondary College, 10am - 2pm.

Once again, LEISURE TIME will have an information stall to promote what our church offers to seniors in our local community.

There will also be many other information stalls, demonstrations and some refreshments.

Please drop in to see us at the Expo. We would love to see you there.

Leisure Time Committee

Margaret Fraser

FUND RAISING FOR ASYLUM SEEKERS

Churches in the Outer Eastern network have been offered an opportunity to raise funds for asylum seekers, by manning The Lion's Den Opportunity Shop in Blackburn for the week commencing October 11. We need to provide staff for 3 hour shifts, Monday to Friday 10am-1pm and 1pm-4pm, and Saturday 9am-12noon. We would be supervised by the manager. There is a desperate need for volunteers and anyone willing to give up 3 hours for this cause would be mightily appreciated!

Contact Robin Pope 9561 7021 or popesr@aapt.net.au if you are able to help.



The Property Committee would like to thank the congregation and hire groups for their cooperation and willingness to assist last week while the 4-day Christian Research Association Conference used all our facilities. This event contributed a further **\$4,500** to the church funds and the complex was well received by the organisers and guests.

In addition, a cheque for **\$2,300** has been received from our ladies who provided morning and afternoon teas for the Conference. A very big 'thank you' to Faye Wagon and her hard-working team.

Warren Greenwood.

SUPPORTIVE CARE LINK SERVICE

Please contact **Laurel Muir 9560 1518** if you are aware of people needing the support provided through our Care Link Service.

We are glad to be of service.



UCAF / ST. LEONARDS FASHION PARADE

An invitation has been received from St. Leonard's Friendship Club for their Fashion Parade on Monday October 25th, 12 noon. Tickets \$15. We have been allotted 9 tickets and their Secretary needs to know how many and be paid by October 4th.

Contact Ann Wardell 98846814 if you would like a ticket

DAYLESFORD GETAWAY - from Monday 18 October onwards.

A group of congregation members over the last few years have taken their caravans or hired cabins at the Daylesford Caravan Park for a few days to relax and have fun and fellowship. Many are returning this year from Monday 18 October onwards and would welcome any others. If interested talk to the Chamberlains, Lemkes or Lennons - stay as long or as little as you like - and add your name to the list on the office counter if you wish to go.



You must make your own booking early as cabins are filling fast.



Phone the Daylesford Caravan Park on 5348 3821.

DIARY DATES 2010

*(Legend: R1-Room 1, R2-Room 2, R3-Room 3, R4-Room 4,
K-Kitchen, F-Fellowship Area, C-Church, H-Hall, V-Vestry, O-Outside Venue)*

Monday 20 September (School Holidays)

- 10.30 am** Leisure Time R1, F & K
- 7.30 pm** Alpha Course at 15 Southdown
- 7.30 pm** Meditation Group O (Contact: Bobbie Rooks 9803 0379)
- 8.00 pm** Badminton H (Contact: Ian McMillan 9803 1813)
- 8.00 pm** Young Adult Group O (Contact: Helen Boucher 8819 3714)

Tuesday 21 September (School Holidays)

- 9.00 am** Tennis - Ladies Social O (Contact: Eileen Scott 9800 4005)
- 8.00 pm** Deo Volente R1

Wednesday 22 September (School Holidays)

- 8.00 pm** Young Adult Group O (Contact: Alanee Hearnshaw 0402 030 342)
- 8.00 pm** Free Spirit O (Contact: Deb Leigh 0411 778 417)

Thursday 23 September (School Holidays)

- 7.30 pm** Band Practice R3
- 8.00 pm** Choir C (Contact: Barbara Hurst 9803 9346)
- 8.00 pm** Badminton H (Contact: Ian McMillan 9803 1813)

Friday 24 September (School Holidays)

- 10.00 am** Ineke's Friday Morning Group R2)

Saturday 25 September (School Holidays)

- 1.00 pm** Social Tennis O (Contact: Graeme Pratt 9560 7991)
- 6.30 pm** Chinese Church R1 & K

Sunday 26 September (School Holidays)

- 900 am** Kids Church Roster: Kerryn & Jude

KIDS HOPE

Our Kids Hope (one to one mentoring) program at Highvale Primary School is proving to be rewarding for both the child and mentor. We are currently short one mentor and so have a student from Highvale Primary who is in need of a special friend in a mentor. If you have ONE HOUR a week that you can spare and would like to spend some quality time with this student, please contact me ASAP.

Carolyn Blakemore (9886 4451 or cazmb@tpg.com.au)

DIARY DATES 2010

*(Legend: R1-Room 1, R2-Room 2, R3-Room 3, R4-Room 4,
K-Kitchen, F-Fellowship Area, C-Church, H-Hall, V-Vestry, O-Outside Venue)*

Monday 27 September (School Holidays)

- 10.30 am Leisure Time R1, F & K
7.30 pm Alpha Course at 15 Southdown
7.30 pm Meditation Group O (Contact: Bobbie Rooks 9803 0379)
8.00 pm Badminton H (Contact: Ian McMillan 9803 1813)
8.00 pm Young Adult Group O (Contact: Helen Boucher 8819 3714)

Tuesday 28 September (School Holidays)

- 9.00 am Tennis - Ladies Social O (Contact: Eileen Scott 9800 4005)
7.30pm Communications Committee R2
8.00 pm Deo Volente R1
8.00 pm Encounter O (Contact: Lois Hosking 9560 1981)

Wednesday 29 September (School Holidays)

- 8.00 pm Young Adult Group O (Contact: Alanee Hearnshaw 0402 030 342)
8.00 pm Free Spirit C (Contact: Deb Leigh 0411 778 417)

Thursday 30 September (School Holidays)

- 8.00 pm Choir C (Contact: Barbara Hurst 9803 9346)
8.00 pm NO Badminton H (Due to hall being set up for Wedding)

Friday 1 October (School Holidays)

- 10.00 am Ineke's Friday Morning Group R2)
7.30pm Adult Group C - The Melbourne Male Choir

Saturday 2 October (School Holidays)

- 1.00 pm Social Tennis O (Contact: Graeme Pratt 9560 7991)
2.30 pm Wedding C
6.30 pm Chinese Church R1 & K

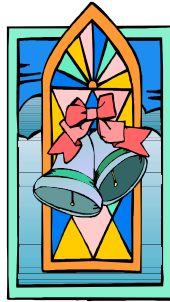
Sunday 3 October (School Holidays)

- 900 am Kids Church Roster:

LEIGHMOOR TEA DANCE

Uniting Aged Care - Leighmoor Centre presents the **Leighmoor Tea Dance** on 30 September from 1.30 to 3.30 pm at Koorang Uniting Church, 177 Murrumbeena Road, Murrumbeena. The traditional tea dance comes alive with an afternoon of dancing, live band music and afternoon tea.

TICKETS \$10 - Bookings Essential - Phone: 9532 1094 - refreshments included.



Alison Dingwall and Brian Clarkson

are getting married on
Saturday 2 October 2010 at 2.30 pm
and would love to share this happy occasion
with you.

Following the Service, please join them for
Afternoon Tea in the Hall.

If attending, add your name to the list on the Office counter
by Sunday 26 September

ROSTERS - 2010

BIBLE READERS

September 19	9.00 am	Geraldine Fleming
	11.00 am	Elwyn Pederson
September 26	9.00 am	Graham Peters
	11.00 am	Evelyn Fleming

DOOR STEWARDS

September 19	9.00 am	Eric & Lesley Armstrong, Bruce & Margaret Walker
	11.00 am	Pam Graham, Margaret Bald
September 26	9.00 am	Ted Bedford, Keith Boundy, Fiona Leister
	11.00 am	Lesley & Eric Armstrong

ELDERS - COMMUNION STEWARDS

September 19	8.00 am	Jonathon Chong
	11.00 am	Herb Fleming, Shirley Harding, Elwyn Pederson

ELDERS

September 19	9.00 am	Marjorie Bedford, Lois Hosking	<u>VESTRY</u>
	11.00 am	Margaret Duncan, David Jackson	Alan Barnard
September 26	9.00 am	Brian Clarkson, Barbara Krieger	Joy Jackson
	11.00 am	Peter Barr, Jan Clear	Graeme Frecker
			Ken Devos

FINANCE STEWARDS

September 19	9.00 am	Alan & Margaret Lemke
	11.00 am	David & Sue Mair
September 26	9.00am	Michael & Joanne Boldiston
	11.00 am	Robert O'Brien, Shanta Mohinadeen

FLOWERS

September 19	Margaret Frecker
September 26	Gail O'Brien

MORNING TEA

September 19	Margaret Fraser, Leighton & Glenys Collins
September 26	Jean Fullard, Audrey Moloney, Alison Hawkins

ORGANISTS

September 19	8.00 am	Elwyn Pederson
	9.00 am	Robert Fleming
	11.00 am	Geoff Willis
September 26	8.00 am	Wallis Gandell
	9.00 am	Worship Band
	11.00 am	Robert Fleming

WELCOME TABLE

September 19	Jan Clear, Judith Greenwood
September 26	Frances & John La Fontaine

CHOIR INFORMATION: <http://wiki.gwuc.org.au/gwuc/ChoirPage> or phone 9803 9346

CLEANING - 25 September 2010

Area 1: John & Marj Snare
Area 3:

Area 2: Peter & Ruth Llewellyn
Lawns: Peter Thorpe, Paul Hart



As part of the Glen Waverley and District InterChurch Council
“Cycle of Prayer - Congregations praying together”, we at
 Glen Waverley Uniting Church lift up in prayer Rev W Muschamp
 and his congregation at Redeemer Lutheran, Glen Waverley.

<p>Glen Waverley Uniting Church</p> <p>Postal Address: Cnr Bogong Avenue & Kingsway Glen Waverley 3150</p> <p>Office Hours: Mon-Friday 9.00 am – 5.00 pm (except Public Holidays)</p> <p>Phone: 9560 3580 Email: office@gwuc.org.au Fax: 9560 1735 Internet Address: http://www.gwuc.org.au</p> <p style="text-align: center;">http://wiki.gwuc.org.au/</p>		<p>REV GREG FRY ph: 9561 3031 Email: gjandco@bigpond.net.au</p> <p>REV INEKE GYLES ph: 9703 1870 Email revineke@hotmail.com</p> <p>Ministry for Seniors ALISON DINGWALL ph 9560 3167 Email madingwall@optusnet.com.au</p> <p>Children & Families DEBBIE DAVEY ph: 8802 7028 Email: debbiedavey67@gmail.com</p> <p>Ministry for Youth & Young Adults ALANEE HEARNshaw ph: 0402 030 342 Email alanee.h@gmail.com</p>
------------------------------------------------------------------------------------------------------------------------------------------------------------------------------------------------------------------------------------------------------------------------------------------------------------------------------------------------------------------------------------------------------------------------------------------------------------------------------------------------------------------------------------------------------------------------------------	--	------------------------------------------------------------------------------------------------------------------------------------------------------------------------------------------------------------------------------------------------------------------------------------------------------------------------------------------------------------------------------------------------------------------------------------------------------------------------------------------------------------------------------------------------------------------------------------------------------------------------------------------------------------------------------------------------------------------------------------------------------------------------------------------



**5 WEEKS TO GNWC
GRAND FETE
SATURDAY 16th OCTOBER, 2010
8.30am – 2.00pm**

All the usual stalls and events – and there are lots of ways you can help.



PUT THURSDAY AFTERNOON
OCTOBER 14 & FRIDAY OCTOBER 15 IN
YOUR DIARY – AND COME ALONG
AND HELP WITH 'SET-UP' DAY. WORK
FOR ALL – SO ALL WELCOME

**SPECIAL
ATTRACTIONS**

**PEDAL CARS
ENTERTAINMENT**

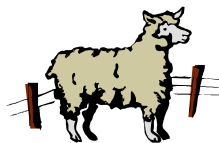
Waverley Calisthenics Club
Highvale Primary School Choir
Glen Waverley Primary School Choir
Syndal Baton Twirlers
Puppet Show

SILENT AUCTION

(including 2 Philip Island holidays)

FREE ANIMAL FARM

(from 9.00am to midday)



CRAFT & SEWING – Talk to Judith Greenwood [9803 8373] or Laurel Muir [9560 1518]. They would love some help.

PLANT STALL – Start potting up some cuttings and make a donation to this popular stall.

SILENT AUCTION -Donations of items for this stall always welcome.

Talk to **Cliff Baker [9802 8990]**. He would love to hear from you.

AND – start your spring cleaning. Don't forget to put aside items for our stalls–pre-loved clothing, books, and treasure [?]

LET'S MAKE SURE WE HAVE PLENTY OF STOCK FOR OUR STALLS.



STORAGE NEEDED – Do you have any space we can use for storage – empty garage, shed???? Please contact Cliff Baker – 9802 8990 if you can help out.

NEED MORE INFORMATION?

CONTACT:

MURRAY LOWE

9885 8514

YAN EMMS

yemms@hotmail.com

JUDY FRY

9561 3031

The Hub

As a Hub volunteer, I am often asked :

- What's The Hub about?
- What do you have to do?
- Does it really work?

Here are my answers to these questions.

What is the Hub about?

For me, The Hub is about giving a friendly face to our Church on week days. Many of us call into the church for a variety of reasons – to drop something off, to collect something, to see Wendy on business, or to attend a meeting. We usually intend to dash in and out and be on our way, BUT - on Tuesdays and Thursdays, between 10.00 am and 2.00 pm you will hear some music playing in the foyer, and a group of people sitting around a coffee table, drinking tea or coffee, and eating too many of Judith's legendary biscuits, while busily engaged in catching up with each other. Very few people resist the opportunity to stop and join in. Many find themselves still there twenty minutes later, having caught up with someone they haven't seen for ages or having at last put a name to a familiar face. While this may be seen as providing hospitality to only those within the Church family, this has proved to be unexpectedly valuable. Moreover, it presents a warm and inviting image to passers-by who sometimes drop in to see what's going on, to people from the community who have come to make enquiries, and to some lonely people who are glad of a hot drink and a chat.

What do The Hub volunteers do?

They talk!

They welcome everyone who comes in.

They answer questions.

They make cups of tea, dispense biscuits ,(and wash up afterwards!)

They listen.

They see what goes on in the life of our Church, and are glad to be part of it.

Does it work?

Why don't you come and find out?

**SPECIAL MORNING TEA
AT THE HUB
GLEN WAVERLEY UNITING CHURCH
DURING SENIORS' WEEK**



Thursday 7th October 2010

10 am – 12 noon

ALL AGES WELCOME



Come and share morning tea with our seniors who volunteer their time to help in our church and our community in so many different ways.

Bring your family and friends.

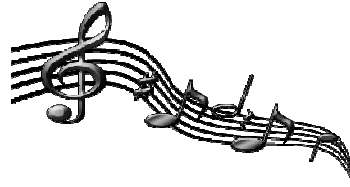
Surprise entertainment at 10.45am.

If you are coming, please add your name to the list on the counter outside the office.

If you need transport to attend the morning tea please phone the Church Office on 9560 3580.

**GLEN WAVERLEY UNITING CHURCH
ADULT GROUP**

presents



**THE MELBOURNE
MALE CHOIR**

Friday 1 October—7.30 pm at GWUC

\$5 at the door

All welcome—supper provided

A choir of 20 who will perform a variety of works by:

**Faure, Caiccini, Rogers & Hammerstein, and
Andrew Lloyd Webber**

Solo Artist:

Tony Meeuwsen

Musical Director:

Chris Stock

Accompanist:

Amanda Kepert

Enquiries:	Pat/Ross	9780 2691
	Bobbie	9803 0379
	Graeme	9561 1370