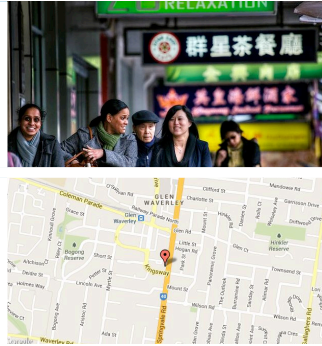

GWUC

Questions



Who are we?

Diverse

Accepting

Seeking to follow Jesus

Princes and princesses of the kingdom

Small lights as part of the Christ light

People journeying together

Christ-centred

Looking for guidance and direction

Congregation within the Uniting Church

An enlightened group of people ... enlightened by God's love

Under the umbrella of UCA and following the precepts and vision of way of thinking of UCA.

Our thinking is formed in a different way from other denominations and is distinctive.

A community that serves others.

A community of ordinary people, just people like everyone else.

Changing in dynamic.

Faith-seekers.

Endeavour to be humble in God's service.

Diverse in age and theology
Busy group

Community of Faith

Multi-cultural

(Need to meet people where they are)

Predominantly anglo saxon

Large number of members here a long time

Open to people coming here

Christian

Worshipping community

GWUC

People on the way

Typical Australians

Relatively comfortable financially

Last bastion of what GW used to be

Ethnic diversity but we don't represent community now

One of the biggest Anglo Uniting Congregations in Vic, Tas

Faith Community

Diverse

Welcoming to new arrivals

Progressive technology

Gathering community

All will fall into place if we follow Christ

Core facts are the same even if we have different beliefs ... what are these.

Glen Waverley Uniting Church congregation in both group and individual sense.

Live in a secular world and are in part bound by the restrictions of this world.

Sacred space and sacred mission.

What do we offer?

Variety of worship experiences

Space for passions

Variety of opportunities for engagement

A multitude of skills and gifts

People working together

A Christian community where people will come when they want to hear God speak

A range of services by a group of people who are well intentioned

Welfare, hope, love, pastoral care

Coffee!

Space to talk to God

Amazing location

Phenomenal facilities

5 member ministry team

Multiple worship opportunities

Companionship

God

Many programs for people who want to come here

Filling a gap[of what council / Gov doesn't offer

Belonging

Community / fellowship / support

Opportunity to explore and grow faith

Safe place to ask questions and wonder

A place for people seeking refuge and guidance

Endeavour to offer love, care, compassion, acceptance, support, hospitality.

Are we encouraging?

Important to meet people where they are and not think that we are all right and they are wrong.

Haven't always got it right.

Different styles and ideology.

Youth

Broadcast & pod cast

Gatherings

Links to a wider community

Endeavour to offer love, care, compassion, acceptance, support, hospitality.

Are we encouraging?

Important to meet people where they are and not think that we are all right and they are wrong.

Haven't always got it right.

Friendship in community

Open door policy to Playgroup & Hub

Example to others

Hospitality

Bible tells us how to be happy in a changing world

Help and compassion

Church is a friendly place

Mission to display the gospel to all within our reach ... "Go into all the world ..."

Offer the knowledge of the life and intentions of Jesus Christ

Offer a place for worship with like-minded people.

Engage in outreach to others.

Attempt to measure our success with a level of satisfaction in Christian life of those we touch. Bhutan index of happiness.

Who do we serve?

Christ

Local and wider community

God

Wider church

Ourselves and each other

Energy users

Nursing Homes

Youth

Families

People exploring

God.

God's people.

Ourselves by empowerment.

Everyone else.

God through Christ

Our members through groups within the Church

Pastoral Care

Do we serve ourselves ... is this selfish or part of our path and the journey we are on.

Are we individuals who come together in a group.

All within our reach and our capacities.

Missional & Functional Group Goals

For 2014

COMMUNITY HUB M.G. IN 2014

Because of the variety of activities that are included in the Community Hub, we have 2 main objectives for each of the activities and one overall objective covering all the activities.

Cooc

1. To continue to offer support, company and friendship to each other. To be able to offer a place for people to come rather than stay at home on their own. To laugh and to use our minds, and keep our minds active by playing Scrabble.
2. To achieve a combined score of over 500 in Scrabble.

Leisure Time

1. To maintain our guest list as close to 20 as possible. So far this year, we have had 5 Ins and 7 Outs, which is fairly typical of a group at this stage of life's journey.
2. To participate in the adoption of Safe Church processes in a way which assists both our guests and our volunteers to be seen to be participating in a safe and nurturing environment. Our isolated seniors are a very vulnerable group.

Playgroup

1. To start another playgroup - to assist the many parents who are on the waiting list. As you are aware, Playgroup have achieved this, and therefore, we are very proud!!!
2. To continue to grow relationships with those in the community around GWUC, who need support.

The Hub

1. To continue our special morning teas which are bringing people into our church from the local community and to advertise these morning teas and the normal Hub days more widely in the community. We advertised our Australia's Biggest Morning Tea at The Hub in the local paper, and as a result we had over 50 extra people come to our morning tea.
2. To continue to grow relationships with the people who come to The Hub from the community and to offer support to these people who are in need of support in various ways.

Welfare

1. To provide practical, spiritual, social and emotional support to those in our Church and in the wider community.
2. To encourage independent functioning and the use of existing community resources including those within our Church.

Overall Objective

1. To continue to open up our church even more to the wider community as a welcoming, supportive and friendly place of Christian hospitality.

COMMUNITY OUTREACH MISSIONAL GROUP

In 2014 Community Outreach missional Group has performance goals which include:

- maintaining and growing the information flow between GWUC members and the Group relating to past COP activities and other global Outreach projects (new and old) as they may arise.
- We also seek to assist with maximising the efficiency of providing material and monetary support to these projects within the current capabilities of the GWUC resource pool.

PROPERTY

The buildings are owned by the UCA Property Trust and we manage them as stewards. We are able to do almost anything we want if we present a story, supported by the congregation with how it is to be paid for, and as long as UCA see benefit, we would be allowed to pursue our vision.

The Property Committee oversee the Careful Kitchen Crew who have been instrumental in ensuring that no one has been injured on our property due to food safety weaknesses.

We have statutory responsibilities from Monash Council and UCA responsibilities.

We support the mission and vision of the GWUC Communities within the cost constraints placed upon us.

We have an ageing building, with ageing facilities and ageing volunteers to look after it.

Vision:

To increase hirings as much as possible to make the running costs of the complex a minimal drain on church finances.

To lower the running costs of the church as a proportion of costs.

Broadcast ministry:

We have not been brought under the wing of any Community Group. Originally, we were to be a part of the Faith Community but at that time, no one was interested in us.

We offer worship, wedding and funeral service recording to a wide variety of events.

Vision:

To record all possible services

To create a broadcast streaming service that will allow an unlimited number of people watch any or all recorded services live. This may require a cost contribution by them.

COMMUNICATIONS COMMITTEE

Effective communication:

- helps members of the congregation, office bearers and church staff maximise the benefits of being involved with our church; and
- provides a view of our congregation and its activities to the wider community.

We have implemented 24 ways of communicating:

- 10 printed, 9 electronic, 2 in person, 3 using signs

Goals for 2014

- Refresh the Church web site
(this is how people beyond our congregation see us)
- Effective use of Facebook
(we are looking for a champion to drive this)

INCLUSIVE COMMUNITY

1) To seek to develop vibrant, welcoming and supportive fellowship for all age groups within the church community by hosting lunches, morning teas and intergenerational fun nights.

2) To improve and strengthen our pastoral care and slowly implement the Pastoral Partners program.

3) To provide support including prayer support, bereavement support and support for everyday needs when required for example transport, meals and help with English.

FAITH DEVELOPMENT

Two key statements for 2014

- a) In light of the life & witness consultation which encourages faith development and the assembly affirmation this year as a season of teaching and learning, we will hold 2 study sessions this year.

The first “Finding light in Darkness” was held in March/April this year and 70+ participated in these groups.

We plan to have another study session in August/September this year and we hope to encourage as many as possible of our congregation to participate in these groups/.

- b) We will encourage people to share their faith stories through questions displayed on tables where worshippers gather for coffee/tea after the services. Rev Neil has taken leadership in this and some of the topics discussed have been a favourite hymn/song, favourite Bible verse, person who has influenced your life

Why are we trying to do these activities ?

We recognise that all members of this congregation are seeking to journey towards God but are at different locations and using different routes. We want to foster discussion groups in which people will not feel threatened, but are comfortable to share their faith experiences and questions and be encouraged and strengthened through each others stories. We want to see people taking active steps to grow in their faith and discover Gods purposes in their lives. We are seeking resources and topics for discussion that will provide food for thought and enable us to grow as God people and discern what God wants for us.

I quote from the document sent out for todays meeting about mission

If mission were action, with no reflection, we would go off the rails.” (Ross Langmead)

I guess through our activities we are seeking to develop this reflection

We believe that Gods word is divine, a double edged sword, therefore needs to be so well ingrained in us so that everything we do, say and how we live our lives would be in accordance to Gods Presence. We are to show God’s character in and through our lives. We believe therefore daily growth through personal reflection, sharing of our experiences with those in the community and formal teaching needs to be encouraged in our community.

Ideas & Dreams

The following were shared by the attendees at the meeting

How do we encourage our members to share their faith?

How can we be creative about our service times?

Have we lost sight of our discipleship role?

Should we purchase a supply of bibles in Chinese (and other languages) to give away?

Who are the poor and needy in Glen Waverley? How can we support them?

How do we develop and encourage a ministry in the Kingsway?

How can we develop a ministry to students?

How do we engage with Chinese New Year?

How do we internally develop our sense of community?

How do we engage more with the youth and young families within our church?

How do we incorporate our dream and visions into the next Growing Generous Givers program?

Can we play a recording of our services at times during the week (with intentional relationship engagement)?

How do we encourage our visitors to become involved in the life of the church without being too 'preachy'?

How do we raise our profile in the community so we are known for more than just the fete?

How do we encourage the hub volunteers to share WHY they are helping those who come to the hub activities?

How do we open up our church to other Christian groups?

What are the practicalities of inviting the Indonesian congregation to use our premises?

Internal
Working to be more inclusive
The challenge of welcoming people to our church and then encouraging them to come back!
Need strengthening of pastoral care
Matching skills and gifts to current programs is comfortable but it is uncomfortable when they don't match
We will find it difficult to get volunteers in 10 years as our congregation ages. Urgency to put new people in charge of the ship
Need to encourage young families more

Strategy
Need rolling 5 year strategic plan with 12 month Action Plans
Challenges: Strategy often done in crisis or change and unconnected
Missional Groups great at verbalising what's happening tomorrow but not good at looking to the future
Global culture and cultural mix
We need to be brave with our ecumenism

Modern world = communication
(but have we missed the boat?)
Need to think about how we use electronic media

Church
There are 2 different groups:

- New – Is our message relevant? How do we attract 'new' people with an old worship model? How do we provide different demonstrations of worship to those from different cultures?
- Current – How do we 'grow our business?'
- Should we open our church to Christians from other cultures to run their own worship?

Community

We need to be involved in

- Chinese new year
- Monash festival
- Seniors / youth / Nadoc week

(and then intentional follow-up)

We should run our own community programs during these festivals

How do we make connections with the Multi-cultural community?

Challenge: Church in different cultures often looks different

More fete leaflets!

Conduct The Hub in The Glen or Kingsway? Rent a shop for this?

We can't expect people of different cultural base to worship within our cultural base

Should we run classes in Mandarin?

Internal

Celebrate the good stuff

Homework on our language when we talk about our faith

Need the ability to start conversations with people

People don't see the church image of someone caring and helping, but more often it's an image of power that is seen

Morning tea pancake day ... do we take opportunities to speak about God at events like this?

Like to see the youth

God has to be seen as part of our lifestyle

Embarrassed to talk about God

Need to relate to others

Is our faith most important?

God in action stories.

Passing of the peace ... is it a sacred conversation or a general one.

Worship in other languages ... scriptures in other languages.

It all takes time.

Intensive teaching and preaching about the basics of faith and the witness of faith in our congregations. We have different ages and backgrounds.

Chinese congregation member mentioned a mid-week fellowship is a good starting point with sharing of a meal and the faith.

Community connection between congregations.

Education of young people in our church towards Christianity through cross gen.

Focus on Jesus, his beliefs and the parables.

Chaplain the strip

Ecumenical approaches

Stronger alliances with interfaith

Aware of the culture, less institutional religion

Responses to what is happening in the world, creating spaces etc to respond, being a voice

Community activities beyond the church

Supporting people on councils, school boards etc within the community.

Community profile, growing it

Relationships - deeper, growing & supportive

Alternative service times and days

Honouring wisdom and tradition whilst allowing change and new expression.

Accessible ways for young children to learn and do serving others at a church level

Weekends away camps etc, supported by others, i.e cooking etc

Facilitated, space to be family

Support for children

Intentional intergenerational connections at different places and times (non pressured times)

Questions for the future & now.

Beliefs are becoming more fluid....how do we engage in that

Don't want children to face the same arguments re music, dress codes, or how they express their faith.

Previously defined by our communal beliefs, how do we define ourselves with a divers