

**CAE Book Group - Wednesday 1 August at 7.30pm**

Meeting at home of Dorothy Lockhart, 30 Winston St Glen Waverley, 9802 8461.

**Adult Group - Friday 3 August at 8pm**

Join us for Adult Group on Friday 3 August at 8pm in the fellowship area. Please come & enjoy a cup of tea or coffee, light supper and fellowship.

All are welcome. Bev & Lindsay Brown 9561 2136.

**West Papua Open Day - Sunday 5 August from 1pm**

All are welcome to attend the West Papua 'Open Day'. The day starts with lunch at 1pm and Guest Speaker Jacob Grench at 2pm. Jacob will speak about "Australia-Indonesia Military Relations". There will also be live music from The Neighbours. Meet at the FRWP Office (rear of Lifestyle building), 828 Collins Street, Docklands (3 stops from Southern Cross). Please join us for a friendly and informative afternoon.

For more information contact Faye Gregson 0402 853 147.

**UCAF - Tuesday 7 August at 10am**

UCAF members will meet in the fellowship area for morning tea at 10am. At 10.30am we will meet in the Church for our meeting. Noela Bartlett will entertain us with her expertise on the piano. Everyone is most welcome to attend. Goods bought will be for GWUC Welfare Committee. Enquiries: Barbara Thompson 9802 3980.

**Save the Date - Bush Dance - 18 August from 2pm**

All welcome to join in the bush dance - \$8 per adult, \$25 per family. This is a fund raising event for our congregation. See the August monthly bulletin for more details.

**GLEN WAVERLEY UNITING CHURCH**

Cnr Bogong Avenue & Kingsway,  
Glen Waverley, VIC, 3150

Office: Mon & Thu: 9.30am - 5pm  
Tue, Wed & Fri: 9.30am - 3pm  
(Except Public Holidays)

Heather Hon - Office Manager  
Wendy Pepper - Office Assistant  
9560 3580

[office@gwuc.org.au](mailto:office@gwuc.org.au)  
[gwuc.org.au](http://gwuc.org.au)

**MINISTRY TEAM**

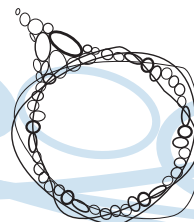
REV NEIL PETERS - MINISTER OF THE WORD  
9561 3031 - revneilpeters@gmail.com

DI PATERSON - PASTORAL CARE WORKER  
0400 961 052 - dpaterson7@bigpond.com

ALANEE HEARNshaw - YOUTH & YOUNG ADULTS  
0402 030 342 - alanee.h@gmail.com

DIETRICH CHEUNG - CROSS CULTURAL MINISTRY  
0435 596 784 - dietrich.cheung@gmail.com

Account Name: Uniting Church Glen Waverley  
BSB: 033 052 Account Number: 92 2198



# Glen Waverley

## Uniting Church

**Welcome** to Glen Waverley Uniting Church which is a faithful, Christ-centred community that meets God and shares that unconditional love

*If you're new to our congregation, please say hello at the welcome table in the foyer after the service.*

**SUNDAY JULY 29****Pentecost 10**

**10.00am** Combined Service  
**11.30am** Congregational Meeting

Ministry Team

**1.00pm** Indonesian Worship

Rev Iskandar Lim

Today's 10am service is being recorded

2 Samuel 11:1-15; Psalm 14; Ephesians 3:14-21; John 6:1-21

**SUNDAY AUGUST 5****Pentecost 11**

**8.00am** Contemplative - Communion  
**9.15am** Interactive - Communion  
**11.00am** Traditional  
**1.00pm** Indonesian Worship  
**4.30pm** Children & Families  
**5.30pm** Creative Worship

Ross Mackinnon  
Alanee Hearnshaw  
Alanee Hearnshaw  
Rev Dr Apwee Ting  
Children & Families  
Alanee Hearnshaw

2 Samuel 11:26-12:13a; Psalm 51:1-2; Ephesians 4:1-16; John 6:24-35



## What's on this week?

(Legend: R1-Room 1, R2-Room 2, R3-Room 3, R4-Room 4, K-Kitchen, F-Fellowship Area, C-Church, H-Hall, P-Playground, V-Vestry, O-Outside Venue, G-Grass Area, CO-Office, SSpace - Sacred Space)

### Monday 30 July

10.00	am	Playgroup	R2/3	Enq: Office 9560 3580
11.30	am	Leisure Time Outing	O	Enq: Cliff Baker 9802 8990
8.00	pm	Badminton	H	Enq: Lynne Boyer 0408 564 443

### Tuesday 31 July

10.00	am	Playgroup	R2/3	Enq: Office 9560 3580
10am - 2pm		The Hub	F	Enq: Judith Greenwood 9803 8373
2pm - 2.45pm		Mindfulness Meditation	SSpace	Enq: Susan Karoly 0433 692 862
3pm - 3.45pm		Mindfulness Meditation	SSpace	Enq: Susan Karoly 0433 692 862

### Wednesday 1 August

10.00	am	Playgroup	R2/3	Enq: Office 9560 3580
10am - 12noon		The Hub	F	Enq: Judith Greenwood 9803 8373
12.30	pm	Table Tennis	H	Enq: Lynne Boyer 0408 564 443
2.00	pm	Beginners English	R1	Enq: Office 9560 3580
7.30	pm	CAE Book Group	O	Enq: Dorothy Lockhart 9802 8461
8.00	pm	Free Spirit	O	Enq: Deb Leigh 0411 778 417

### Thursday 2 August

10am - 2pm		The Hub	F	Enq: Judith Greenwood 9803 8373
10.00	am	Ladies Keep Fit	H	Enq: Eileen Scott 9800 4005
11.15	am	English Conversation	R4	Enq: Jan Clear 9803 6820
2.00	pm	Inclusive Community	R2	Enq: Jan Clear 9803 6820
7.45	pm	Community Outreach	SSpace	Enq: Office 9560 3580
8.00	pm	Uniting Voices	R1	Enq: Office 9560 3580
8.00	pm	Badminton	H	Enq: Lynne Boyer 0408 564 443

### Friday 3 August

10.00	am	Playgroup	R2/3	Enq: Office 9560 3580
12.00	pm	Cohee Scrabble Group	F	Enq: Office 9560 3580
7.30	pm	Youth	O	Enq: Alane Hearnshaw 0402 030 342
8.00	pm	Adult Group	F	Enq: Bev & Lindsay Brown 9561 2136

### Saturday 4 August

1.00	pm	Social Tennis	O	Enq: Office 9560 3580
------	----	---------------	---	-----------------------

## Neil's Health Update

Neil has found the information talks at each Rehab session very informative. Topics have included: diet and heart disease (he will get back to diet after this weekend); understanding the heart, arteries and veins; medications; emotional responses to heart disease; risk factors; and exercise for life. So he is exercising and learning and still doing well.

## Today's Flowers in the church

Today's flowers are arranged by Barbara Thompson



## Today - Meeting of the Congregation

There will be a meeting of the congregation today following combined worship at 10am. The meeting will be held over lunch in the hall. You will be served a basket lunch with a special surprise for dessert.

## Election of Church Councillors

An election for Church Councillors will be held on Sunday September 2nd. Members of the congregation will have an opportunity to vote following each worship activity on that day.

The nomination period for Church Councillors is open (from Sunday July 22nd) until Sunday August 18th. Four Church Councillors have completed their term although some may be willing to renominate. Please prayerfully consider who might be nominated or renominated to serve our Congregation as Church Councillors.

Further information and nomination forms are available from the office and <http://wiki.gwuc.org.au/gwuc/CongregationalPage>

## Planned Giving Letters

These are available from the table in the Foyer. Please check and take yours and any you can deliver. Please check name and address details carefully and advise the Office of any changes necessary.

## To All Open Plate Givers

The Giving Recording Committee acknowledges with much gratitude your personal gift through the Open Plate for the work of our church. It is very much appreciated.

You may like to consider changing to either the envelopes or the Direct Giving system which allow you to make regular gifts. The Direct Giving system means no need for envelopes or cash, regular donations are assured and a reduced workload on Finance Stewards. Currently we have 190 active pledge contributors - 96 using Direct Giving and 94 through the envelope system.

Should you wish to swap to either of these systems, please contact the Recorder, Ken Hutchinson, on 9884 4002.