

## Beeac Premium Bags

If you have an empty Beeac Premium bag, please return it to the church so that we can get them back to our friends in Beeac for this year's fete. Please leave them beside the carpark tank, not inside. Thank you.

Warren Greenwood.

## New Bank Requirements

For those who make payments to Glen Waverley Uniting Church by cheque, could you please follow the new bank guidelines.

All cheques should be made out to Uniting Church Glen Waverley.

If you need to amend a cheque, each place you make a change needs to be signed. If you make a change of words and figures and sign only once, the bank will not accept the cheque.

Thanks for your assistance with this.

## Many Thanks

Hearty thanks is humbly offered to all members of the Glen Waverley Uniting Church community who so ably assisted the Hosking family in their recent move. The family were overcome with the kind and most generous offers of support and can declare the operation successfully complete.

With kind wishes to all from all members of the Hosking family.

### GLEN WAVERLEY UNITING CHURCH

Cnr Bogong Avenue & Kingsway,  
Glen Waverley, VIC, 3150

Office: Mon - Fri: 9.30am - 3pm  
(Except Public Holidays)

Heather Hon - Office Manager  
9560 3580

[office@gwuc.org.au](mailto:office@gwuc.org.au)  
[gwuc.org.au](http://gwuc.org.au)

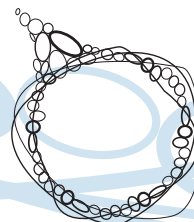
### MINISTRY TEAM

REV NEIL PETERS - MINISTER OF THE WORD  
9561 3031 - revneilpeters@gmail.com

ALISON CLARKSON - SENIORS  
9560 3167 - madingwall@optusnet.com.au

ALANEE HEARNshaw - YOUTH & YOUNG ADULTS  
0402 030 342 - alanee.h@gmail.com

Account Name: Uniting Church Glen Waverley  
BSB: 033 052 Account Number: 92 2198



# Glen Waverley Uniting Church

**Welcome** to Glen Waverley Uniting Church which is a faithful, Christ-centred community that meets God and shares that unconditional love: [meet\\_god@anytime.with.us](mailto:meet_god@anytime.with.us)

*If you're new to our congregation, please say hello at the welcome table in the foyer after the service.*

### TODAY SUNDAY JULY 10

### Pentecost 8

**8.00am** Contemplative - Communion

**9.15am** Interactive

**11.00am** Traditional

**2.30pm** Senior Service of Praise

**4.30pm** Children & Families: Not meeting

**7.00pm** Creative Worship

Members of 8am Community

Rev J Hamilton / Rev N Peters

Rev J Hamilton / Rev N Peters

Alison Clarkson

School Holidays

Rev Julian Hamilton

Today's 9.15am, 11am and 2.30pm services are being recorded  
Amos 7:7-17; Psalm 82; Colossians 1:1-14; Luke 10:25-37

### SUNDAY JULY 17

### Pentecost 9

**10.00am** Combined Service followed by  
Congregational Meeting and lunch

Ministry Team

Amos 8:1-12; Psalm 52; Colossians 1:15-28; Luke 10:38-42



## What's on this week?

(Legend: R1-Room 1, R2-Room 2, R3-Room 3, R4-Room 4, K-Kitchen, F-Fellowship Area, C-Church, H-Hall, P-Playground, V-Vestry, O-Outside Venue, G-Grass Area, CO-Office, SSpace - Sacred Space)

### Monday 11 July

10.00	am	Playgroup	R2/R3	Enq: Office 9560 3580
10.30	am	Leisure Time	R1/F	Enq: Cliff Baker 9802 8990
2.30	pm	Leisure Time C'tee	R1	Enq: Cliff Baker 9802 8990
7.30	pm	Bible Study Group	R2	Enq: Jit Tan 9886 7770
7.30	pm	Meditation Group	O	Enq: Graeme or Bobbie 9803 0379
8.00	pm	Young Adults	O	Enq: Alanee Hearnshaw 0403 030 342
8.00	pm	Badminton	H	Enq: Onn Chin 9884 4061

### Tuesday 12 July

10.00	am	Playgroup	R2/R3	Enq: Office 9560 3580
10am - 2pm		The Hub	F	Enq: Judith Greenwood 9803 8373
12.00	noon	Meditation	C	Enq: Susan Karoly 0433 692 862
8.00	pm	Badminton	H	Enq: Onn Chin 9884 4061

### Wednesday 13 July

10.00	am	Playgroup	R2/R3	Enq: Office 9560 3580
10am - 12 noon		The Hub	F	Enq: Judith Greenwood 9803 8373
8.00	pm	Free Spirit	O	Enq: Deb Leigh 0411 778 417
8.00	pm	Young Adults	O	Enq: Alanee Hearnshaw 0403 030 342

### Thursday 14 July

10.00	am	Ladies Keep Fit	H	Enq: Eileen Scott 9800 4005
10am - 2pm		The Hub	F	Enq: Judith Greenwood 9803 8373
11.15	am	English Conversation	R4	Enq: Jan Clear 9803 6820
8.00	pm	Badminton	H	Enq: Onn Chin 9884 4061

### Friday 15 July

10.00	am	Playgroup	R2/R3	Enq: Office 9560 3580
10.00	am	'Q' Bible Study	R4	Enq: Office 9560 3580
12.00	noon	Cooee Scrabble Group	F	Enq: Office 9560 3580

### Saturday 16 July

1.00	pm	Social Tennis	O	Enq: Graeme Pratt 9560 7991
------	----	---------------	---	-----------------------------

## Today's Flowers in the church

The flowers today are in loving memory of my much loved parents Frederick and Dorothy Sri Ananda and my organ donors.

Arranged by: Shanta Mohinadeen



## Today - 10 July - Senior Service of Praise - 2.30pm

All are welcome to attend this service organised by Ministry to Seniors. Free Spirit will lead the singing and afternoon tea will be held after the service.

## Ministry Team News

Alison Clarkson will be away from Monday 11 July to Friday 9 September. In Alison's absence Elwyn Pederson will be coordinating the ministry to seniors.

Alanee Hearnshaw will also be on leave from 10 July to 31 July.

## Combined Service followed by a Meeting of the Congregation - 17 July at 10am

On Sunday 17 July there will be a Combined Worship Service at 10am followed by a Meeting of the Congregation at 11.30am. Following the meeting there will be a sausage and salad lunch (cost \$5). To assist with catering please add your name to the list on the office counter if you plan to attend.

The report of the last meeting of the congregation and the agenda for this meeting are available at:

<http://wiki.gwuc.org.au/gwuc/CongregationMeetingReports>.

Printed copies are also available on the Stewards Table.

## July Material Aid Offering - Toys for Timor

Your donations of small second hand (or new!) toys for very poorly resourced kindergartens in Baguia, Timor-Leste will be gratefully received. Donations can be left in the basket near the church library or brought along to any of the services on July 10. They will be delivered in person when Judy and Murray visit in August.

For more information please see the July Monthly Bulletin or contact Judy Lowe on 0407 501 855.