

## Pastoral Partners Afternoon Tea - Wednesday 28 January 2015

All Pastoral Partners are invited to join together for afternoon tea on Wednesday 28 January at 2.30pm. This will be an important time of fellowship. There will also be the opportunity to discuss plans for 2015.

Jan Clear & Alison Clarkson.

## Adult Group - Friday 6 February 2015

The first meeting of Adult Group for 2015 will be at the home of Ineke and Tom Giles, and not at Jells Park as has been the tradition. We are planning to car pool so please meet at the church at 4.30pm. BYO picnic tea (BBQ facilities available) and folding chair.

Ineke and Tom live at 97 Belgrave/Hallam Rd, Hallam. Map details can be sent by email if required.

Please RSVP to Jenny Vass on 9874 3701 or [rojenvas@bigpond.net.au](mailto:rojenvas@bigpond.net.au) so we know how many to expect, and whether you will be travelling independently. New members are always welcome.

## Cleaning Roster

Volunteers are sought for the Church Cleaning and Mowing Rosters for 2015. Please put your name on the list on the office counter if you are able to assist. We assume people on the current roster will continue next year, but if you are unavailable please note this on the list.

Ross Lennon - Roster Coordinator.

## Morning Tea Roster

There is now a list available on the Office Counter for those wishing to volunteer for the Morning Tea Roster in 2015. New volunteers are always needed and welcome.

Rewa Feenaghty - Roster Coordinator.

## GLEN WAVERLEY UNITING CHURCH

Cnr Bogong Avenue & Kingsway,  
Glen Waverley, VIC, 3150

Office: Mon, Wed - Fri: 9am - 5pm  
Tues: 10.30am - 2.30pm  
(Except Public Holidays)

Heather Hon - Office Manager  
9560 3580

[office@gwuc.org.au](mailto:office@gwuc.org.au)

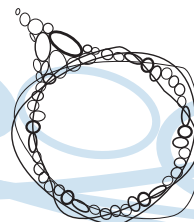
[gwuc.org.au](http://gwuc.org.au)

## MINISTRY TEAM

REV NEIL PETERS - MINISTER OF THE WORD  
9561 3031 - [npeters@iinet.net.au](mailto:npeters@iinet.net.au)

ALISON CLARKSON - SENIORS  
9560 3167 - [madingwall@optusnet.com.au](mailto:madingwall@optusnet.com.au)

ALANEE HEARNshaw - YOUTH & YOUNG ADULTS  
0402 030 342 - [alane.h@gmail.com](mailto:alane.h@gmail.com)



# Glen Waverley

## Uniting Church

**Welcome** to Glen Waverley Uniting Church which is a faithful, Christ-centred community that meets God and shares that unconditional love: [meet\\_god@anytime.with.us](mailto:meet_god@anytime.with.us)

*If you're new to our congregation, please say hello at the welcome table in the foyer after the service.*

**TODAY SUNDAY JANUARY 18**

**Epiphany 2**

**10.00am** Combined Service

Rev N Peters & A Clarkson

Today's 10am service is being recorded

1 Samuel 3:1-10, (11-20), Psalm 139:1-6, 13-18; 1 Corinthians 6:12-20; John 1:43-51

**SUNDAY JANUARY 25**

**Epiphany 3**

**10.00am** Combined Service

Rev N Peters & A Hearnshaw

Jonah 3:1-5, 10; Psalm 2:5-12; 1 Corinthians 7:29-31; Mark 1:14-20



## What's on this week?

(Legend: R1-Room 1, R2-Room 2, R3-Room 3, R4-Room 4, K-Kitchen, F-Fellowship Area, C-Church, H-Hall, P-Playground, V-Vestry, O-Outside Venue, G-Grass Area, CO-Office)

### Monday 19 January

7.30 pm Meditation O  
7.30 pm Communications R2

### Office Open 9.30am - 12.30pm

Enq: Graeme or Bobbie 9803 0379  
Enq: Lesley Armstrong 9560 9003

### Tuesday 20 January

### Office Open 9.30am - 12.30pm

### Wednesday 21 January

### Office Open 9.30am - 12.30pm

### Thursday 22 January

10.30 am Leisure Time Meeting R1

### Office Open 9.30am - 12.30pm

Enq: Pam McDonald 9560 9798

### Friday 23 January

10.00 am "Q" Bible Study Group R4

### Office Open 9.30am - 12.30pm

Enq: Office 9560 3580

### Saturday 24 January

1.00 pm Social Tennis O

Enq: Graeme Pratt 9560 7991

---

## Hall - No Access 12 to 25 January 2015

During the two weeks beginning Monday 12 January to Sunday 25 January inclusive, there will be no access to the Hall. We are having the floor resurfaced and need to keep off it for that period of time so that it can dry and harden. Many thanks for your assistance with this matter.

Warren Greenwood - Property Committee.

## Sunday Church Services - February 2015

Commencing the first week of February our usual service format will resume, with services at 8am, 9.15am 11am and 4.30pm. The 7pm service will resume on Sunday 15 February.

## Office News - January 2015

During the week Monday 19 to Friday 23 January the Church Office will be open between the hours of 9.30am and 12.30pm each day. Heather will be away on leave so Rev Neil Peters will be working in the Office Monday, Tuesday and Wednesday, and Alanee Hearnshaw on Thursday and Friday.

## Today's Flowers in the church

Flowers crafted from Artificial Flowers.



## Many Thanks

Marj Collins and Family - Brian, Ruth, John and Stephen - would like to thank the members of the church family for their practical and prayerful help during the difficult time of Alan's death. As comparative newcomers to this church, your warm acceptance has been a comfort to us all. Thank you again, and God go with us into the future.

## Ministerial Leave

Please note that Alanee Hearnshaw will be taking leave after Christmas. Alanee will be on leave from 26 December to 20 January, 2015.

## Share Emergency Appeal

Following the recent floods in Sri Lanka, Uniting World has set up an Emergency Relief Appeal. You can support this appeal through Share. Please see the notice board outside the office for more details, or pick up a donation slip from the Steward's Table.

## Volunteers Needed to Deliver Leaflets for Used Book Sale

To promote our used book sale in the community, we need about 20 people to letterbox drop 5,000 leaflets to houses in the vicinity of the church. If you can help to deliver the leaflets between 8-20 February, please add your name to the list on the office counter. If you delivered leaflets for last year's used book sale, please tick or cross off your name on the list, depending on whether you can assist again this year.

Enquiries: Peter Anderson - 0411 123 253

## Lenten Studies 2015

Study groups will commence in the week starting Monday 23 February. Details of dates, times and location of groups will be advertised at the start of February. For more information please feel free to contact Alison Clarkson on either phone: 9560 3167 or email: [alison@gwuc.org.au](mailto:alison@gwuc.org.au)