

## Frontier Services

Paul Bartlett has left a number of copies of "At The Very Heart" - Frontier Services Centenary Publication - and the Centenary Tea-Towel with his folks. The book is \$50 and the Tea-Towel \$10. If you would like a copy please contact Warren or Lorraine at church or via the office.

## Wanted - A Home ...

... for many (approx 70) Fowlers Vacola Bottles - medium and small sizes - some lids and clips. Enq: Margaret Williams 9802 2599

## Group Returning to Volunteer in Kenya

A group of people including many who have volunteered before are returning to Kenya on the 27th December. They are once again fundraising through the sale of Christmas Hamper and School Shoes gift cards to support food delivery projects and to fund the purchase of school shoes for the children in the orphanage and the local community. They are also selling calendars which go towards both projects as well as meeting immediate needs in the Nakuru community. The gift cards (\$15 for shoes, \$30 for food hampers) and calendars (\$25) are available from the office and after the 9.15am service each Sunday leading up to Christmas. 100% of the funds go to the projects and the group members pay their own travel and accommodation expenses.

The group's fundraising account details are:

BSB: 50179 Account: 5386 3400 0341 5679

Thank you in advance for your continued support - Kat Mann.

## Sammy Stamp

Sammy Stamp is finished for 2012. Over \$42,000 has been raised this year from stamp sales. A new record. A big thank you to all staff who have assisted by saving and donating stamps throughout the year.

This note is just a quick reminder to everyone to save their Christmas stamps and to ask all family and friends to also save all their stamps for Sammy in 2013.

On behalf of Sammy Stamp many thanks again for your support.

## GLEN WAVERLEY UNITING CHURCH

Cnr Bogong Avenue & Kingsway,  
Glen Waverley, VIC, 3150

Office Hours: Mon-Fri 9am - 5pm  
(except Public Holidays)

9560 3580  
office@gwuc.org.au  
gwuc.org.au

## MINISTRY TEAM

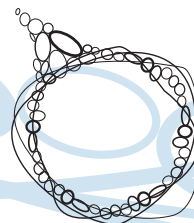
REV. GREG FRY  
9561 3031 gjandco@bigpond.net.au

REV. ROSEMARY CARTER  
9560 9843 rosemary.carter@internode.on.net

ALISON CLARKSON - SENIORS  
9560 3167 madingwall@optusnet.com.au

ALANEE HEARNshaw - YOUTH & YOUNG ADULTS  
0402 030 342 alanee.h@gmail.com

BELINDA CLEAR - CHILDREN & FAMILIES  
9560 3580 baclear@bigpond.com



# Glen Waverley Uniting Church

## Welcome to Our Church

*GWUC is a faithful, Christ-centred community that meets God and shares that unconditional love: [meet\\_god@anytime.with.us](mailto:meet_god@anytime.with.us)*

*If you're new to our congregation, please say hello at the welcome table in the foyer after the service.*

TODAY	SUNDAY DECEMBER 16	Advent 3
8.00am	Contemplative - Communion	Rev Rosemary Carter
9.15am	Interactive - Christmas Alight Focus	Rev Greg Fry / Belinda Clear
11.00am	Traditional - Communion and Lessons and Carols	Rev Rosemary Carter
4.30pm	Family Worship - Christmas Alight	Belinda Clear / Rev Greg Fry
7.00pm	Creative	Alanee Hearnshaw

Today's 9.15am service is being recorded

John 1:10-13

## SUNDAY DECEMBER 23

## Advent 4

10.00am	Combined Service	Rev Rosemary Carter
7.30pm	Christmas Carols on Kingsway	Alanee Hearnshaw

John 1:14-15



## What's on this week?

(Legend: R1-Room 1, R2-Room 2, R3-Room 3, R4-Room 4, K-Kitchen, F-Fellowship Area, C-Church, H-Hall, V-Vestry, O-Outside Venue)

### Monday 17 December

7.00 pm Meditation O Enq: Bobbie Rooks 9803 0379

### Tuesday 18 December

7.00 pm Camberwell Bible Study O Enq: Jit Tan 0400 607 053

### Wednesday 19 December

8.00 pm Free Spirit O Enq: Deb Leigh 0411 778 417

### Thursday 20 December

8.00 pm Uniting Voices C Enq: Elwyn Pederson 9803 1378  
Barbara Hurst 9803 9346

### Friday 21 December

9.30 am Lectionary Group R2 Enq: Office 9560 3580  
12.00 pm Cooee Scrabble Group F Enq: Sandy Whitfield 0417 597 144

### Saturday 22 December

1.00 pm Social Tennis O Enq: Graeme Pratt 9560 7991

---

## Christmas Office Closure

Please note that the Church office will be closed on Tuesday 25 and Wednesday 26 December for the Christmas Day and Boxing Day Public Holidays.

The Office will reopen on Thursday 27 December at 1pm.

## Today's Flowers in the church

The flowers in the church today are in loving memory of Kerryn Frecker, loved and loving daughter of Margaret and Graeme.

Arranged by: Margaret Frecker



## Today ...

Worship at the 9.15am and 4.30pm services today will have a Christmas Alight focus. The 11am worship will be a Lessons and Carols service led by Uniting Voices and Rev Rosemary Carter.

## Many Thanks ...

Thank you so much for your support through prayers, cards, letters, flowers and the personal messages we received during Lyn's illness and death. She was dearly loved. God has her in His keeping. We have her in our hearts.

John and Frances La Fontaine.

## Christmas Cards

Yes, Christmas is fast approaching and this year there are a great range of Christmas Cards available. Cards can be purchased anytime during office hours. Can't get to the office during the week? Cards will be available today in the foyer. All proceeds go directly to the Share Appeal and the Ryder-Cheshire Foundation.

## Empty Christmas Tree

You will notice the Empty Christmas Tree in the foyer. If you would like to donate a gift to Broadmeadows Care, please place it in the boxes under the tree today. It would be appreciated if gifts are unwrapped, and there are no nut products. Gifts need to be left today, Sunday 16 December.

## Christmas Day - Door Stewards Required

Door stewards are required for the 10am service on Christmas Day. Please contact Heather at the church office if you are able to assist with this duty. Thank you.

## Release of Pastoral Ties for Hannah Dungan

Hannah Dungan has accepted appointment at Congregational Development Minister at Kippax Uniting Church in Canberra and will be leaving Koornang Uniting Church at the end of the year.

You are invited to the service for Release of Pastoral Ties at 10am on Sunday 23 December at Koornang Uniting Church. For more information (and to RSVP) please see check the outside noticeboards.