

## Book Club

CAE Book Group will meet on Wednesday 1 February at 8pm at the home of Glenice Peard, 25 Nottingham Street, Glen Waverley. 9802 5496.

## Adult Group

The first meeting for 2012 will be on Friday 3 February at 6pm for a BBQ at Jells Park, Waverley Road Entrance. All welcome. BYO everything (food, drink chairs etc).

## Faith Development Missional Group

Our first meeting for 2012 will be on Tuesday 7th February at 7.30pm at Belinda Clear's home.

## Uniting Church Adult Fellowship

Gather for a cuppa at 10am on Tuesday 7 February, and then hear from Mrs Ann Connan, a member of the Uniting Church in the Victoria/Tasmania Synod. Ann is former national president of Adult Fellowship, and she has been elected as World President of the World Federation of Methodist and Uniting Church Women 2011-2016.

Trading Table & Goods (groceries & toiletries) collected for CARA.

## Men's Fellowship

Our first meeting for 2012 will be on Tuesday 7th February at 2.00pm. Rev Bill Morgan will be speaking on Reflections on Ministry.

## Club 2012

The first Club 2012 luncheon will be held next week, Sunday 5 February. If you dine alone, please join us after the 11.00am Service.

## Shared Accommodation

A young lady who attends Bairnsdale Uniting Church is moving from Bairnsdale to attend Monash University Clayton, and is looking for shared accommodation. For more details please contact the Office.

### GLEN WAVERLEY UNITING CHURCH

Cnr Bogong Avenue & Kingsway,  
Glen Waverley, VIC, 3150

Office Hours: Mon-Fri 9am - 5pm  
(except Public Holidays)

9560 3580  
office@gwuc.org.au  
gwuc.org.au

### MINISTRY TEAM

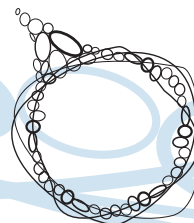
REV. GREG FRY  
9561 3031 gjandco@bigpond.net.au

REV. ROSEMARY CARTER  
9560 9843 rosemary.carter@internode.on.net

ALISON CLARKSON - SENIORS  
9560 3167 madingwall@optusnet.com.au

ALANEE HEARNshaw - YOUTH & YOUNG ADULTS  
0402 030 342 alanee.h@gmail.com

BELINDA CLEAR - CHILDREN & FAMILIES  
9560 3580 baclear@bigpond.com



# Glen Waverley

## Uniting Church

## Welcome to Our Church

*GWUC is a faithful, Christ-centred community that meets God and shares that unconditional love: [meet\\_god@anytime.with.us](mailto:meet_god@anytime.with.us)*

*If you're new to our congregation, please say hello at the welcome table in the foyer after the service.*

TODAY	SUNDAY JANUARY 29	4th Sunday after the Epiphany
10.00am	Worship	Ministry Team

Today's service is being recorded

Galatians 5:22-23; Romans 12:3-8; John 15:12-17

### SUNDAY FEBRUARY 5

### 5th Sunday after the Epiphany

8.00am	Worship - Holy Communion	Rev. Rosemary Carter
9.15am	Worship - Holy Communion	Rev. Greg Fry
11.00am	Worship	Rev. Rosemary Carter
4.30pm	Worship	Rev. Greg Fry
7.00pm	Worship	Rev. Rosemary Carter

Isaiah 40:21-31; Psalm 147:1-11, 20c; Mark 1:29-39; 1 Corinthians 9:16-23



## What's on this week?

(Legend: R1-Room 1, R2-Room 2, R3-Room 3, R4-Room 4, K-Kitchen, F-Fellowship Area, C-Church, H-Hall, V-Vestry, O-Outside Venue)

### Monday 30 January

8.00 pm Badminton H Enq: Ian McMillan 9803 1813

### Tuesday 31 January

11.00 am UCAF Executive V

### Wednesday 1 February

1.15 pm Community Hub MG R1

8.00 pm Free Spirit O Enq: Deb Leigh 0411 778 417

8.00 pm CAE Book Group O Enq: Glenis Peard 9802 5486

### Thursday 2 February

8.00 pm Badminton H Enq: Ian McMillan 9803 1813

8.00 pm Uniting Voices R1 / C Enq: Barb Hurst 9803 9346 or  
Elwyn Pederson 9803 1378

### Friday 3 February

9.30 am Lectionary Group H

12.00 pm Cooee Scrabble Group F Enq: S Whitfield 0417 597 144

6.00 pm Adult Group O Enq: G & L Collins 9560 0161  
P & L McDonald 9560 9798

---

## PLEASE NOTE...

### 2012 Commencement dates

**Playgroups** will recommence during the second week of February 2012.

**Leisure Time** will recommence on Monday 6th February.

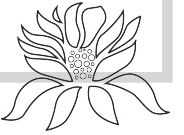
**Meditation** will recommence on Monday 6 February at 8.00pm.

**The Hub** will recommence on Tuesday 7th February, 10am-2pm.

In 2012, The Hub will be operating on Tuesday and Thursdays 10am-2pm, and Wednesdays 10am-12noon during school terms.

## Thoughtful Flowers

The flowers in the Church today have been arranged by Lesley Lamble.



## Congratulations

Congratulations to Alison Clarkson and Belinda Clear for the thought, creativity and leadership they put into last Sunday's 10am service. We were refreshed and are sure God was also.

John Hurst, Chair, Church Council

Ross Mackinnon, Elders' Convenor

## Australia Day Honours

Congratulations to Dr Warren Bartlett OAM who received his award this Australia Day (Thursday) for services to the Uniting Church and Community.

## Church Council Elections

We are calling for nominations for Church Councillors. Please prayerfully consider whether you feel called to serve our Church community in this way. Nomination forms are available in the foyer. Nominations close on 12 February.

## 'With Love to the World'

If you are interested in subscribing to 'With Love to the World' for 2012, please pay \$18 to the Church Office by the end of February.

## Pancake Day Helpers

Pancake Day is on Tuesday 22nd February this year and we are looking for volunteers to help serve pancakes at the Church between 11am and 2pm. If you are able to help out, please put your name on the list on the office counter.

## Act for Peace - Christmas Bowl

The Glen Waverley Uniting Church made a total donation to the Christmas Bowl of \$6425.45, consisting of \$3,575 private donations and \$2,850.45 from anonymous donations and open plate collection. Thank you to all for your generous donations.

## Walkers or Drivers Wanted!!!!

To promote the Book Fair in the community, it is proposed to do a letterbox drop of leaflets. Therefore we require 20 people who enjoy walking and/or driving, to deliver leaflets, after 20 February.

Any assistance, great or small, will be very much appreciated. Names can be added to the list on the office counter, or given to Ian McMillan 9803 1813.